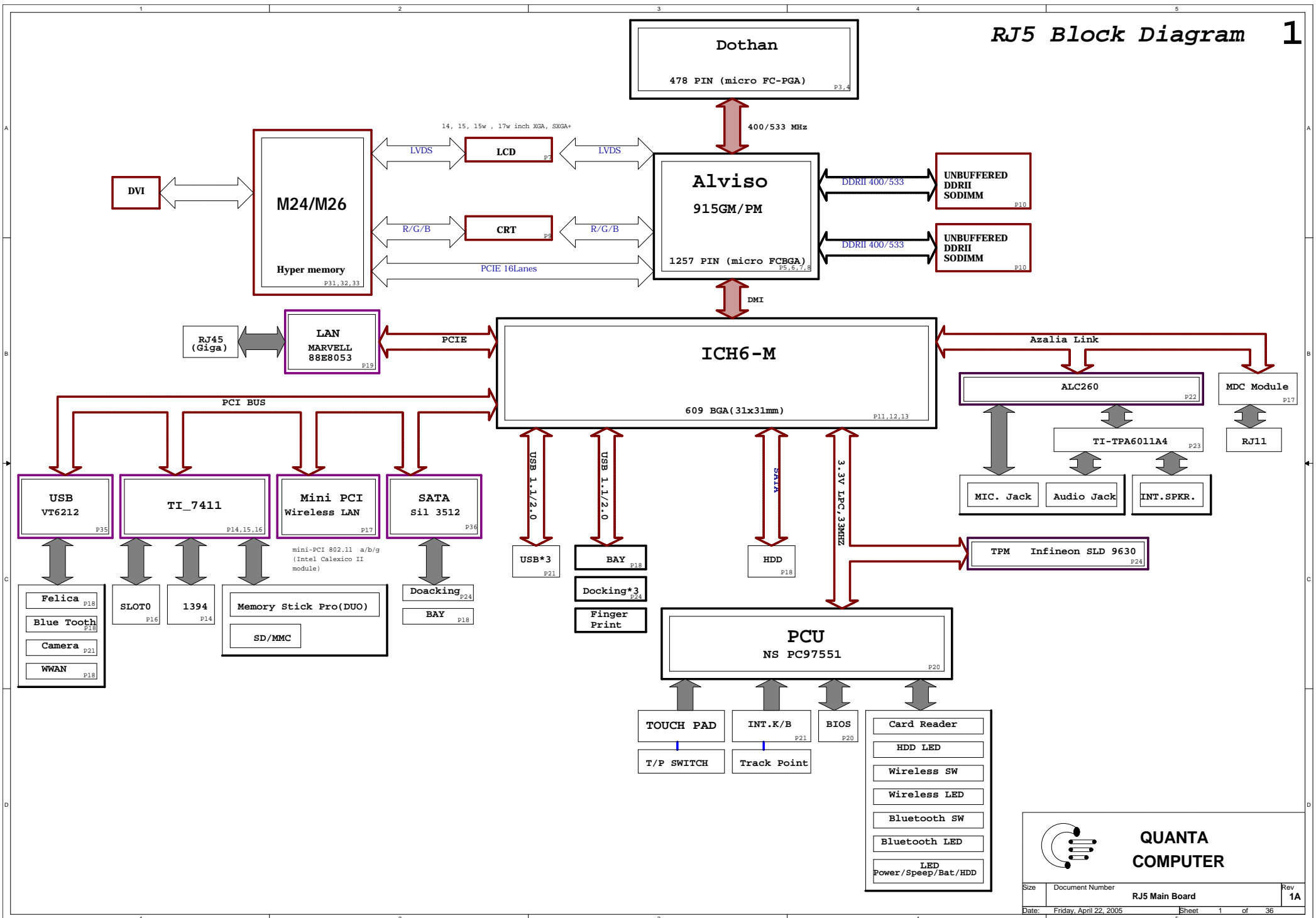
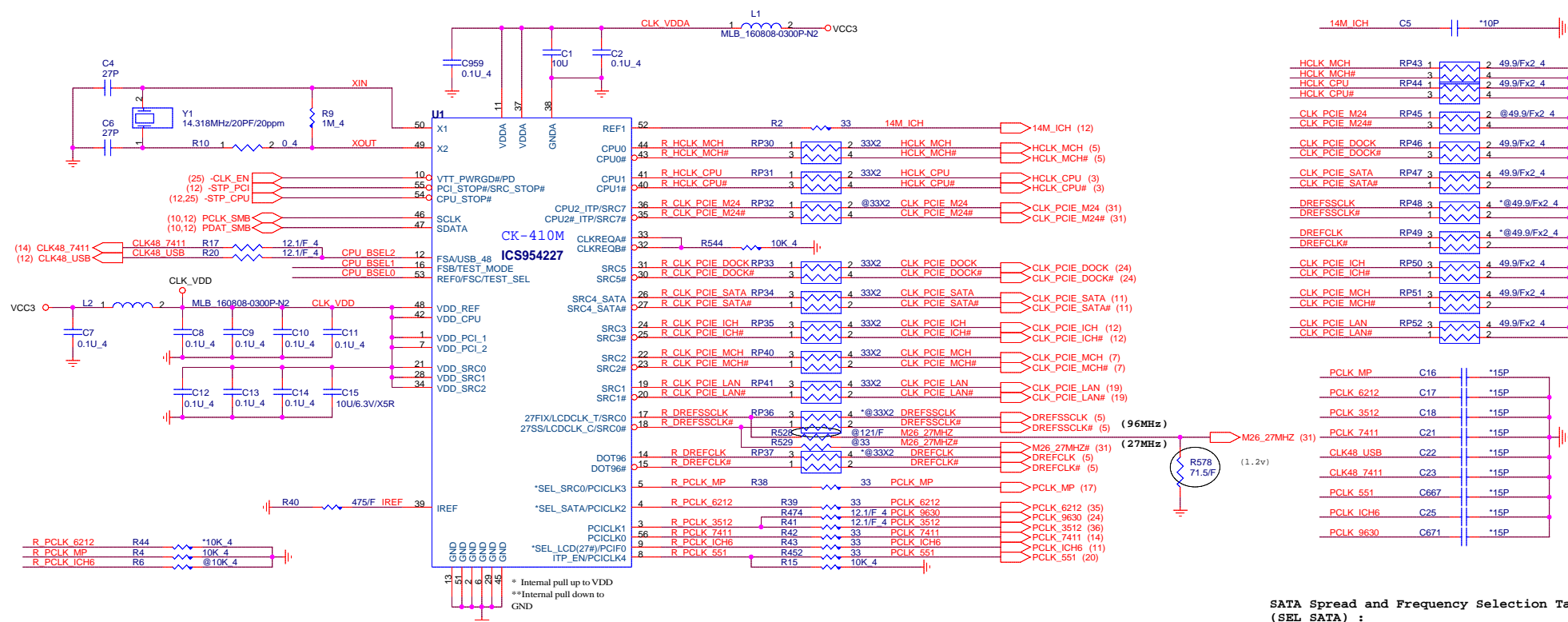


RJ5 Block Diagram 1





SEL_SRC0(Pin 17,18)(R4)

0: LCDCLK Pair
1: SRCCLK0 pair

SEL_SATA(Pin 26,27)(R44)

0: Clock from SRC PLL
1: Clock from SATA PLL

SEL_LCD(Pin 17,18)(R6)

0: 27MHzSS/27MHzSS# pair (M24/M26)
1: LCDCLK pair (915GM)

ITP_EN Function(Pin 35,36)(R15)

0: SRC_7 Pair (Pin 35,36)
1: CPU_2_ITP Pair (Pin 35,36)

IREF (Pin 39):

475_1% : Sets the IREF current to 2.32mA

LCDCLK Spread and Frequency Selection Table (SEL_LCD):

SEL_LCD	SS3	SS2	SS1	SS0	VCO MHz	17,18 MHz	Spread %	SEL_LCD	SS3	SS2	SS1	SS0	VCO MHz	17,18 MHz	Spread %
1	0	0	0	0	500	100	+/-1.5	0	0	0	0	0	864	27	+/-0.25
1	0	0	0	1	500	100	+/-1.25	0	0	0	0	1	864	27	+/-0.5
1	0	0	1	0	500	100	+/-1.0	0	0	0	1	0	864	27	+/-0.75
1	0	0	1	1	500	100	+/-0.8	0	0	0	1	1	864	27	+/-1
1	0	1	0	0	500	100	+/-0.6	0	0	1	0	0	864	27	+/-1.25
1	0	1	0	1	500	100	+/-0.5	0	0	1	0	1	864	27	+/-1.5
1	0	1	1	0	500	100	+/-0.4	0	0	1	1	0	864	27	+/-1.75
1	0	1	1	1	500	100	+/-0.3	0	0	1	1	1	864	27	+/-2
1	1	0	0	0	500	100	3	0	1	0	0	0	864	27	-0.5
1	1	0	0	1	500	100	2.5	0	1	0	0	1	864	27	-1
1	1	0	1	0	500	100	2	0	1	0	1	0	864	27	-1.25
1	1	1	0	0	500	100	1.75	0	1	0	1	1	864	27	-1.5
1	1	1	1	0	500	100	1.25	0	1	1	0	0	864	27	-1.75
1	1	1	1	1	500	100	1	0	1	1	1	0	864	27	-2
1	1	1	1	1	500	100	0.8	0	1	1	1	1	864	27	-2.5
1	1	1	1	1	500	100	0.8	0	1	1	1	1	864	27	-3

SATA Spread and Frequency Selection Table (SEL_SATA):

SEL_SATA	SS3	SS2	VCO MHz	27,26 MHz	Spread %
1	0	0	tbd	100	-0.2 Down
1	0	1	tbd	100	-0.3 Down
1	1	0	tbd	100	-0.4 Down
1	1	1	tbd	100	-0.5 Down

Signal		915GM	915PM
CLK_PCIE_M24	RP32	NI	33X2
	RP45	NI	49.9/Fx2_4
DREFSSCLK	RP36	33X2	NI
	RP48	49.9/Fx2_4	NI
DREFCLK	RP37	33X2	NI
	RP49	49.9/Fx2_4	NI
DREFSSCLK	R528	NI	121/F
	R529	NI	33
R_PCLK_ICH6	R6	NI	10K_4



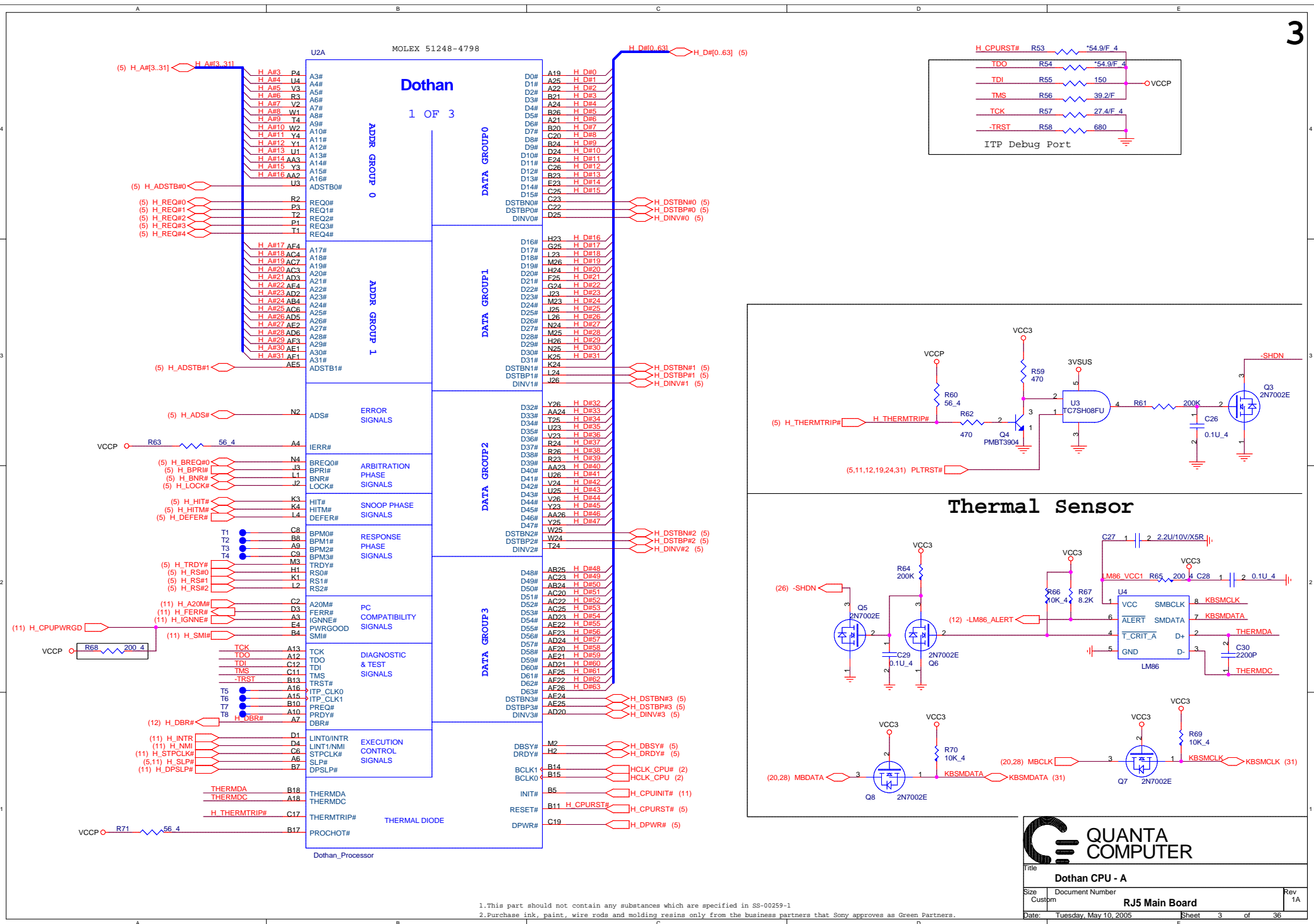
Title: **CLOCK GENERATOR**

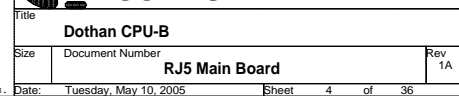
Size: Document Number: **RJ5 Main Board** Rev 1A

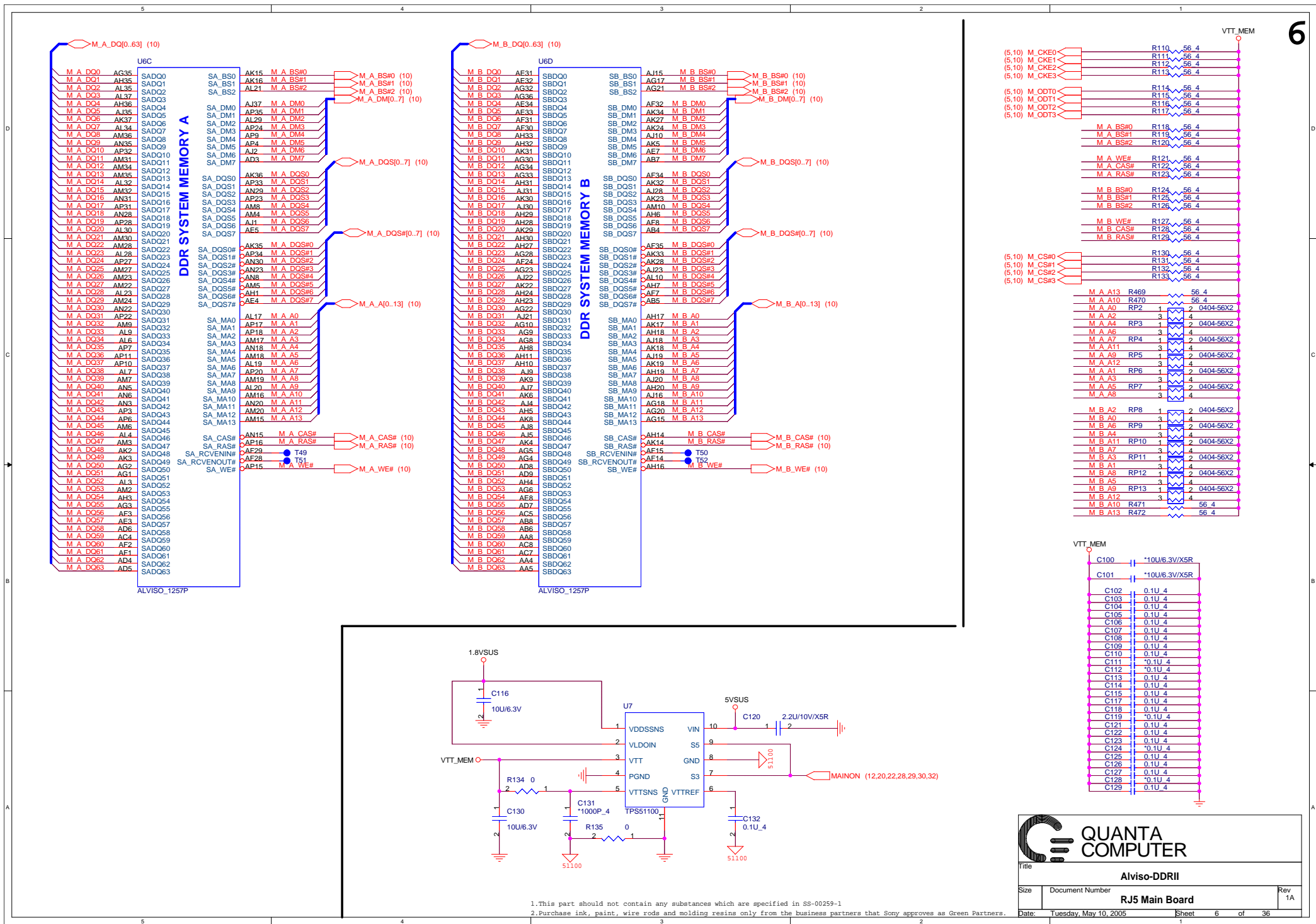
Date: Tuesday, May 10, 2005 Sheet 2 of 36

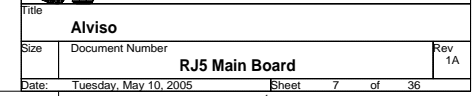
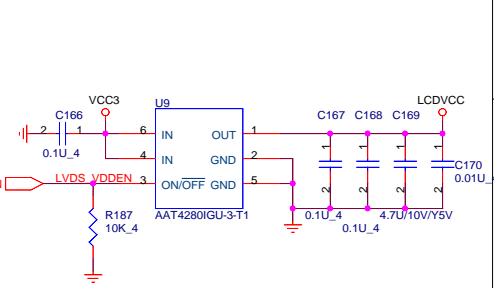
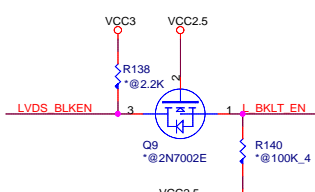
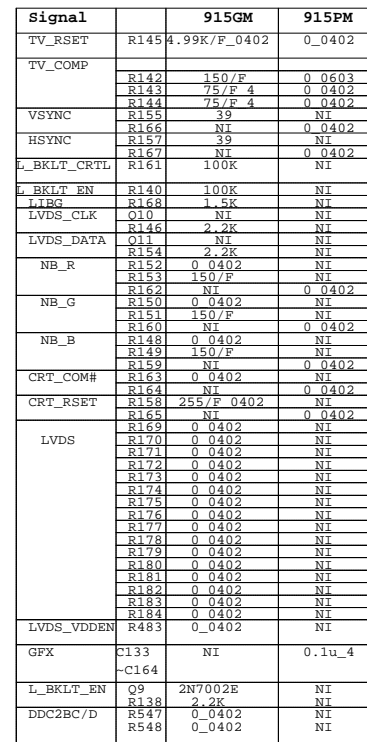
1. This part should not contain any substances which are specified in SS-00259-1

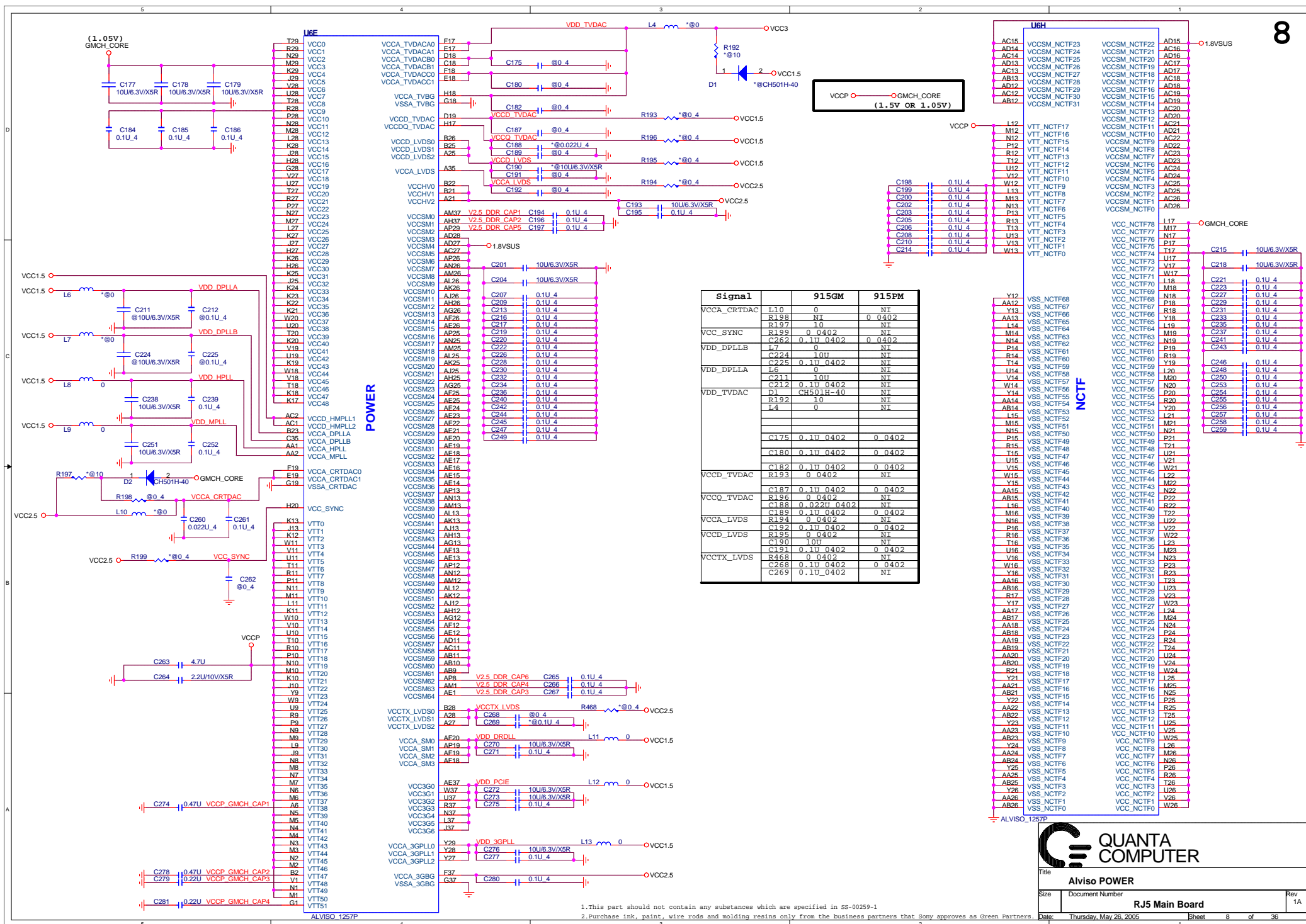
2. Purchase ink, paint, wire rods and molding resins only from the business partners that Sony approves as Green Partners.

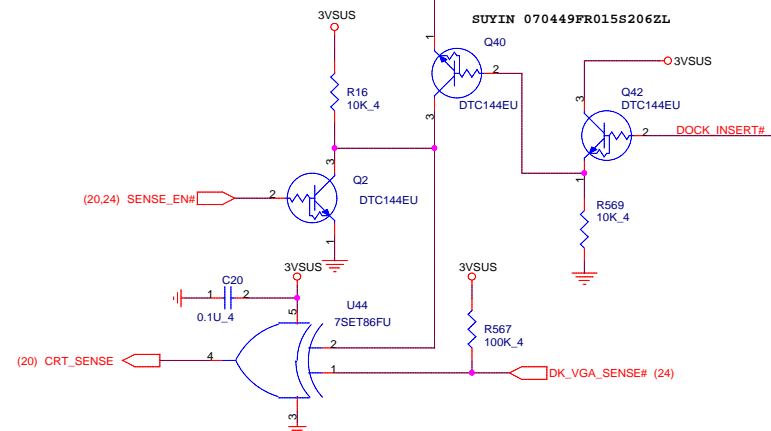
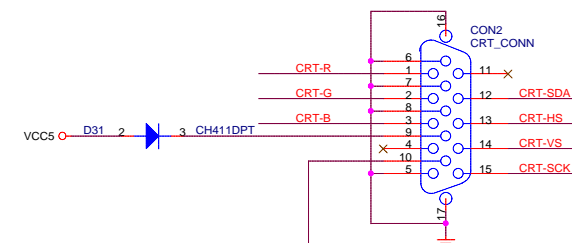







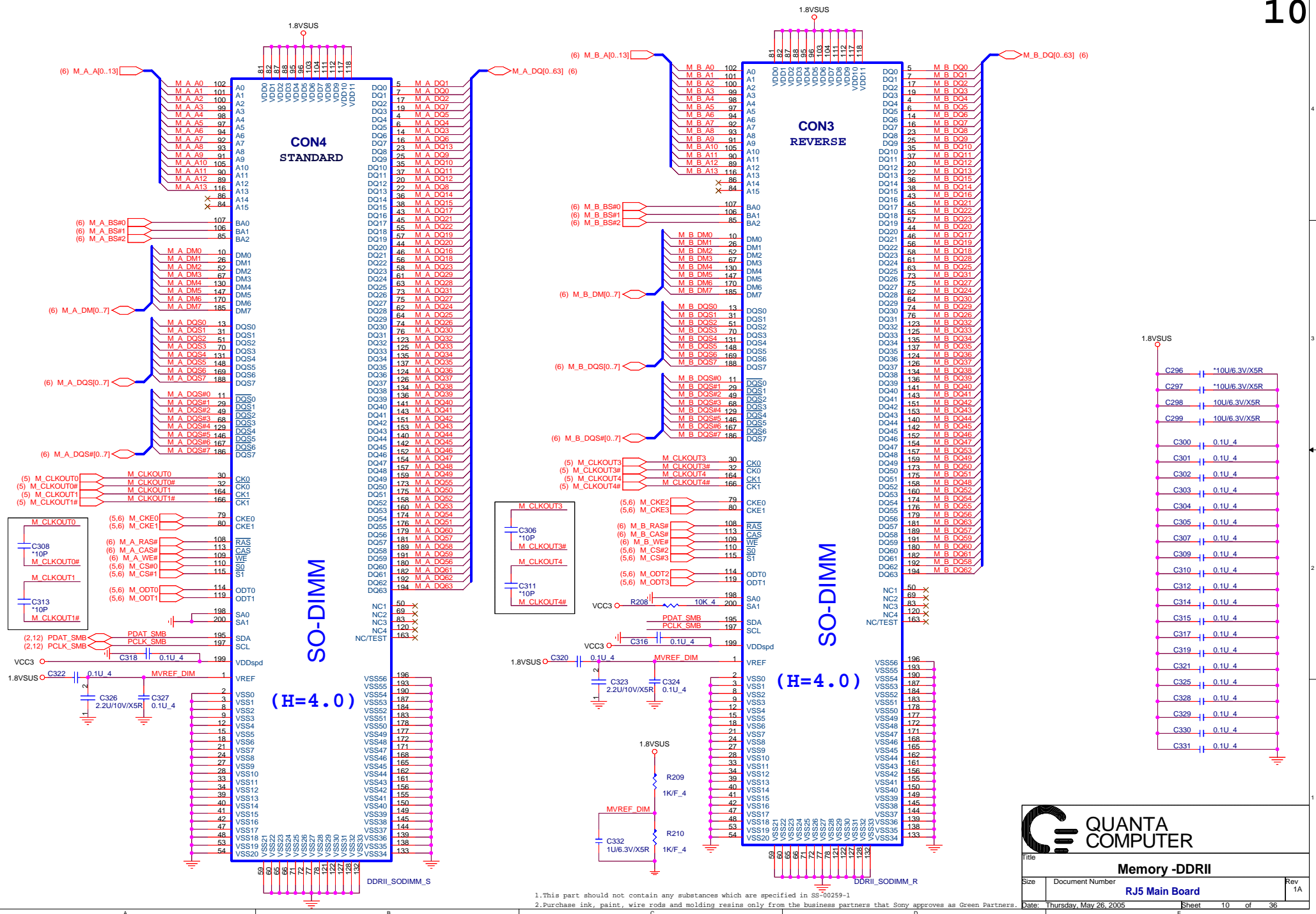


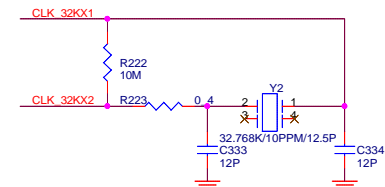




A	B	Y
H	H	L
H	L	H
L	H	H
L	L	L

 QUANTA COMPUTER				
Title				
CRT				
Size	Document Number			Rev 1A
RJ5 Main Board				
Date:	Tuesday, May 10, 2005	Sheet	9	of 36



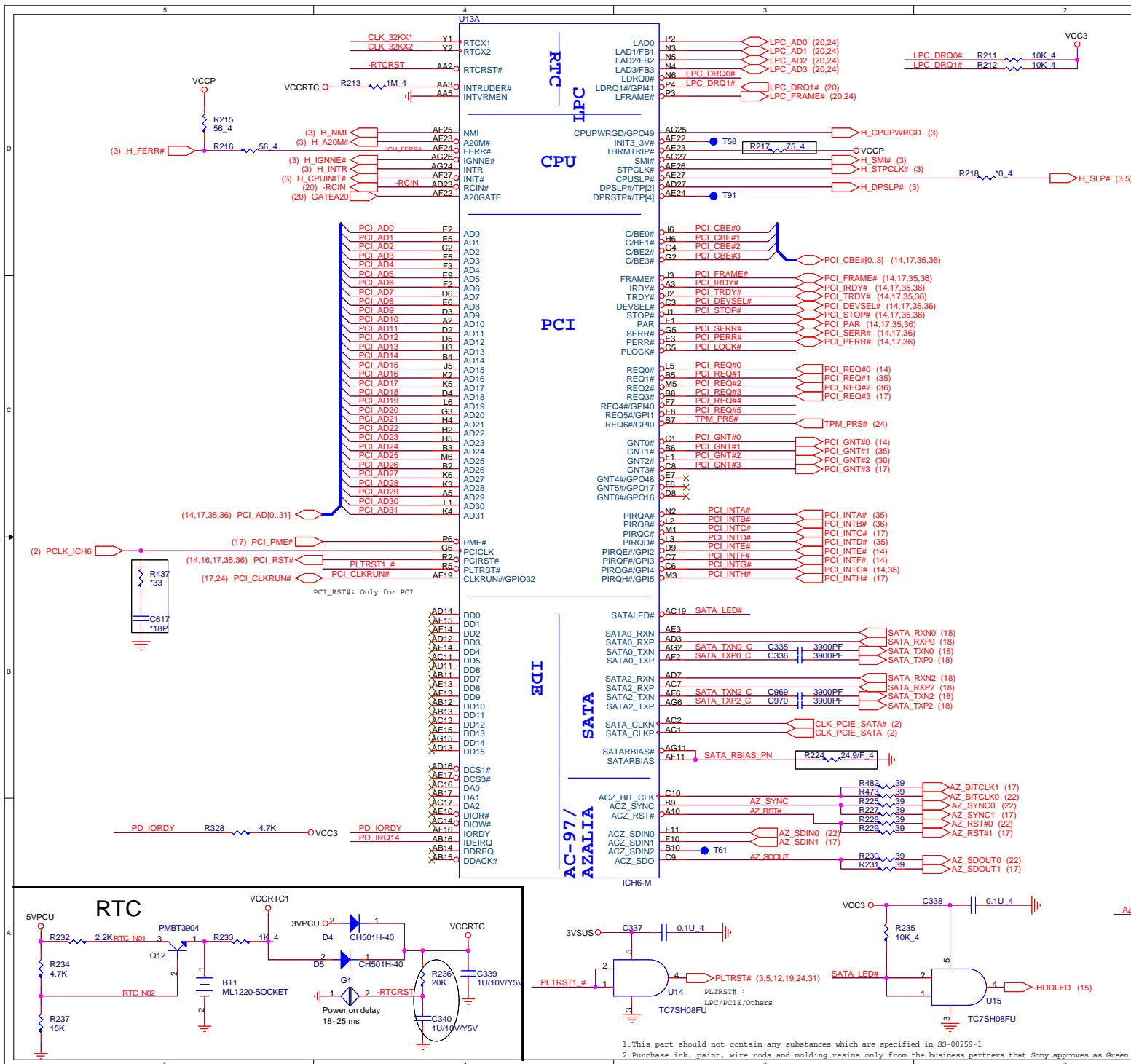


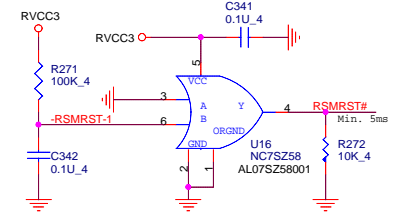
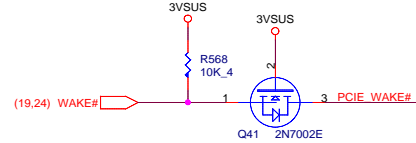
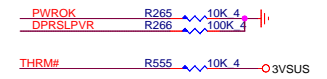
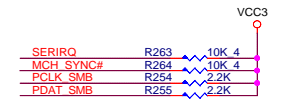
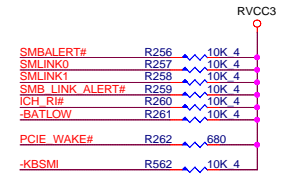
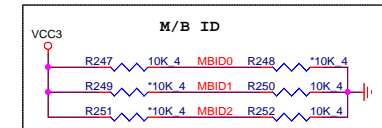
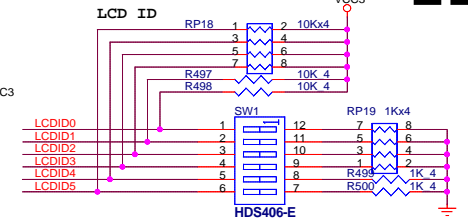
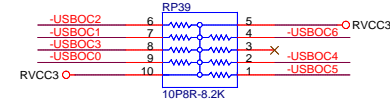
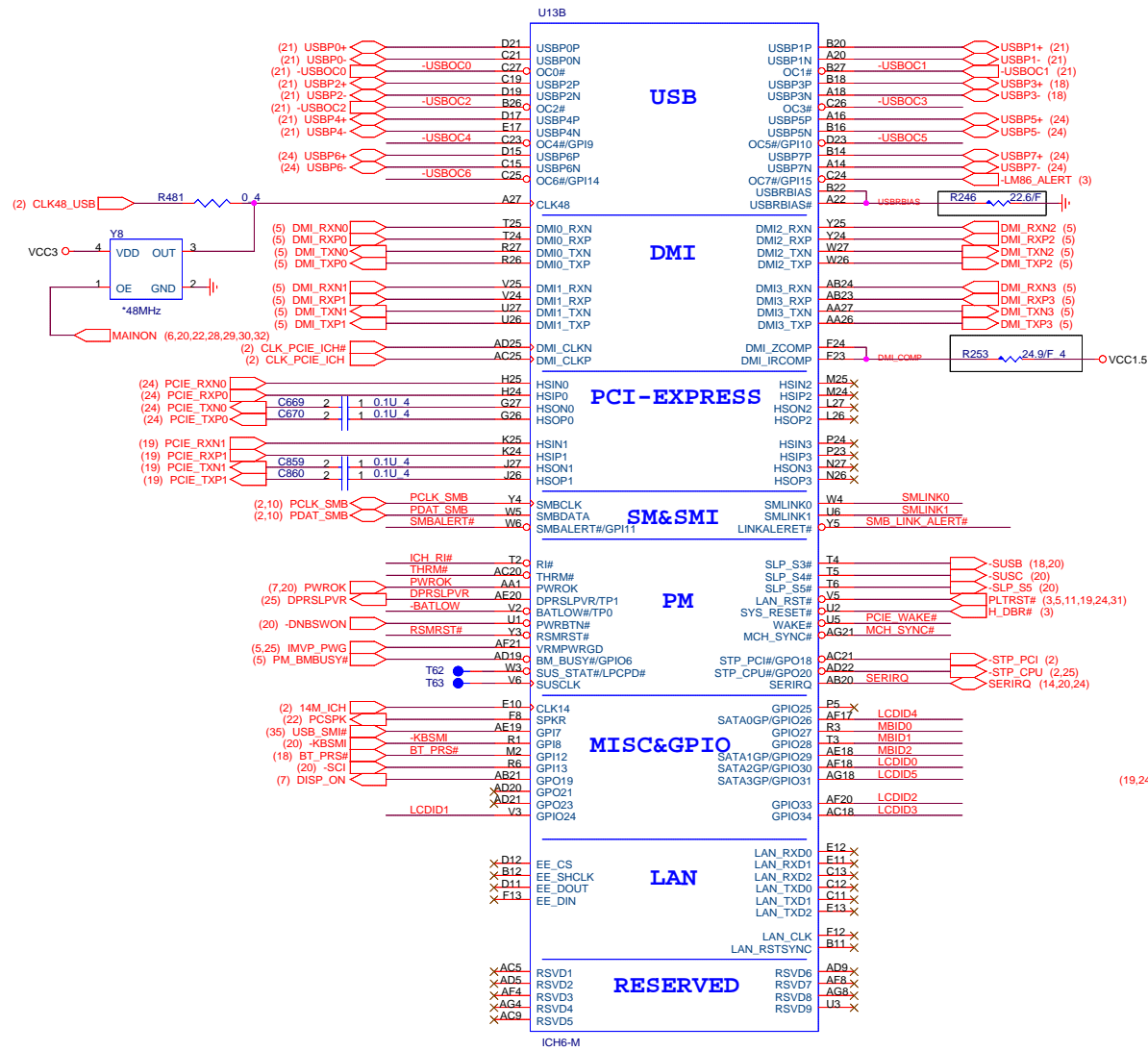
```
PCI_REQ0 : TI-7411
PCI_REQ1 : VT6212
PCI_REQ2 : SATA(Sil 3512)
PCI_REQ3 : MINI PCI
PCI_REQ4 :
PCI_REQ5 : X
PCI_REQ6 : X
IDSEL: (AD16 ~ 29)
AD24 : SATA(Sil 3512)
AD25 : TI-7411
AD26 : MINI PCI
AD27: VT6212
```

```
PCI_INTA# : VT6212
PCI_INTB# : SATA(Sil 3512)
PCI_INTC# : MINI PCI
PCI_INTD# : VT6212
PCI_INTE# : TI-7411
PCI_INTF# : TI-7411
PCI_INTG# : TI-7411,VT6212
PCI_INT# : MINI PCI
```



Title		ICH6-M	
Size	Document Number		Re
		RJ5 Main Board	
Date:	Tuesday, May 10, 2005	Sheet	11 of 36



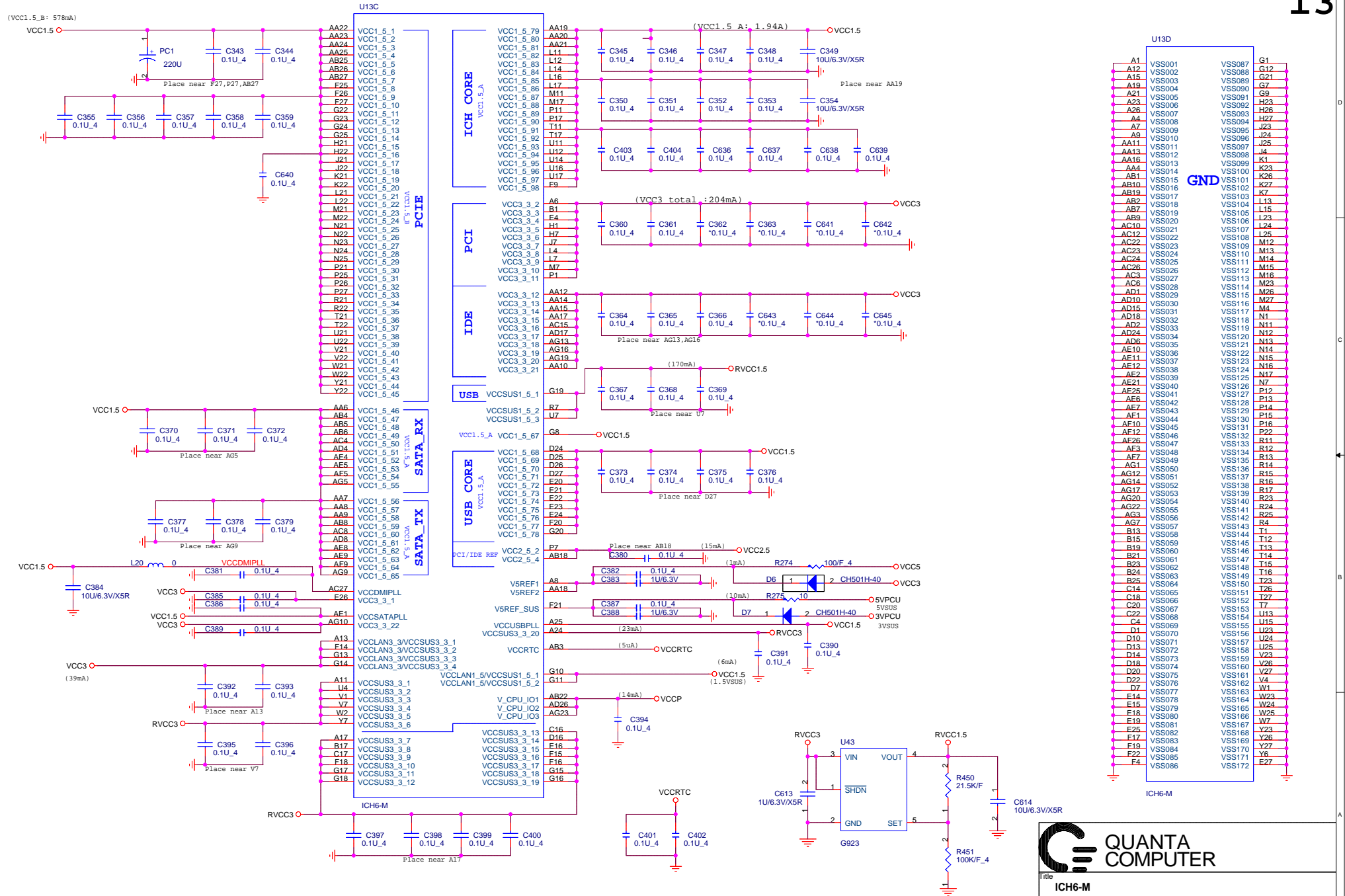


QUANTA COMPUTER

Title: ICH6-M

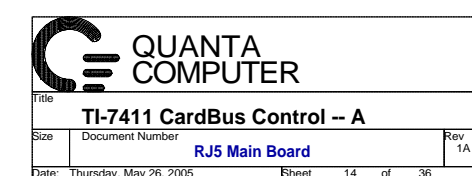
Size: Document Number: Rev 1A

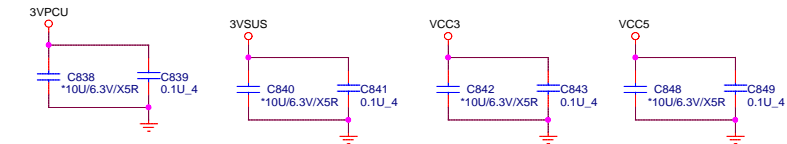
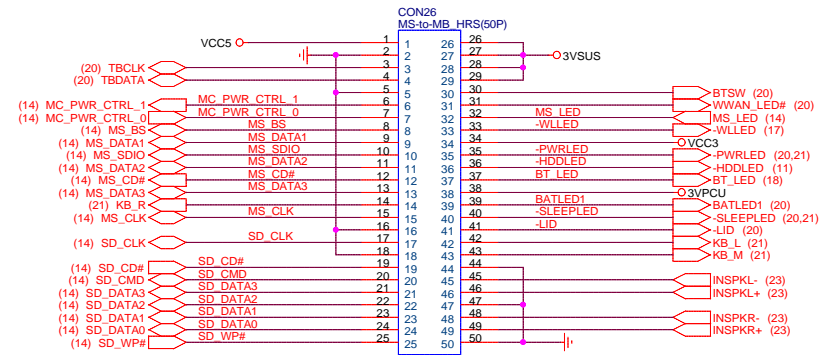
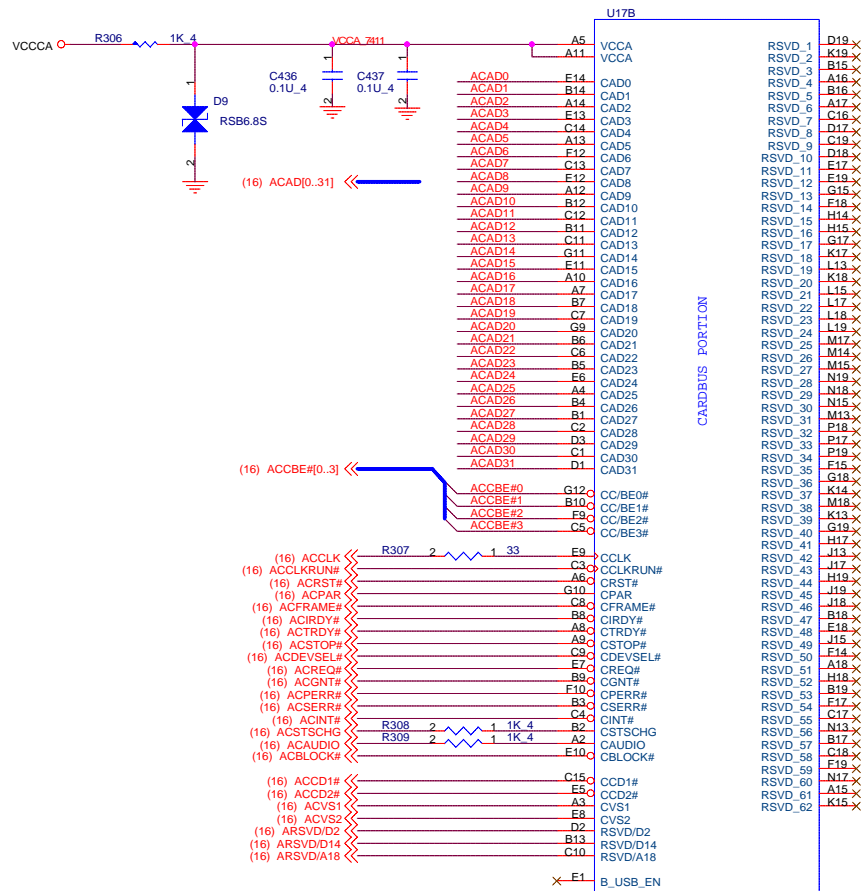
Date: Tuesday, May 10, 2005 Sheet 12 of 36





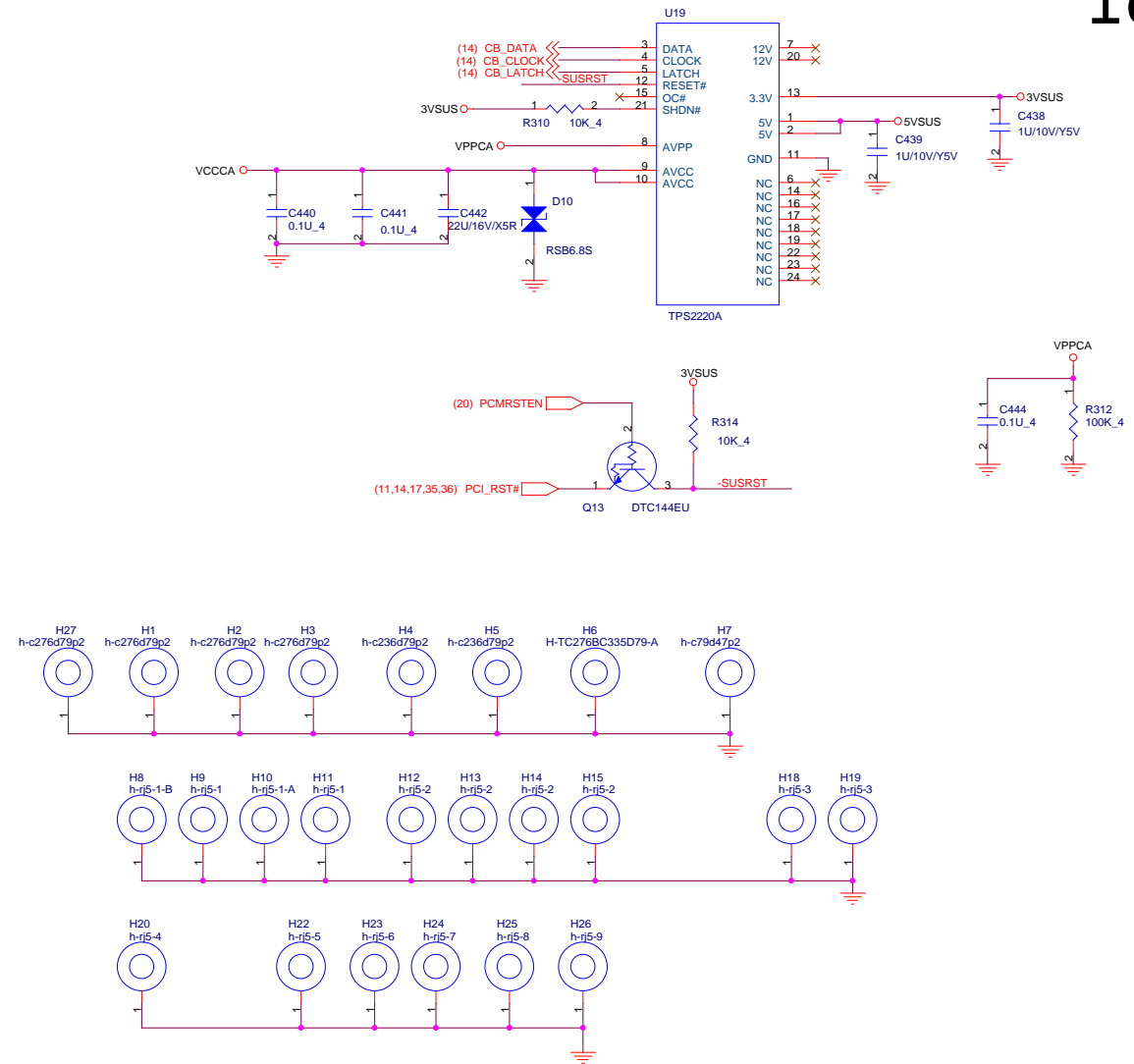
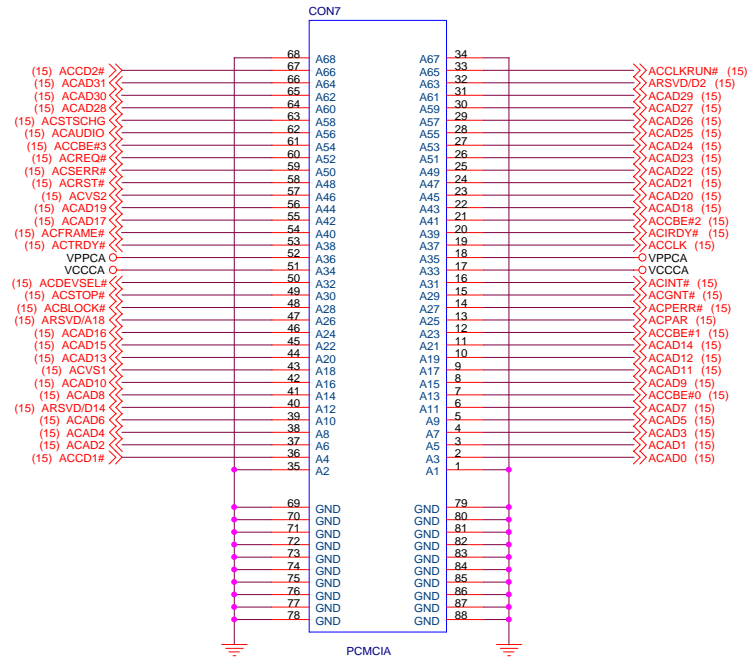
1. This part should not contain any substances which are specified in SS-00259-1

2. Purchase ink, paint, wire rods and molding resins only from the business partners that Sony approves as Green Partners





(15) ACAD[0..31] << 
 (15) ACCBE#[0..3] << 



Title		
CARDBUS SLOT		
Size	Document Number	Rev 1A
RJ5 Main Board		
Date: Thursday, May 26, 2005	Sheet 16 of 36	

MDC V1.5

LED_GP :LED WLEN LINK

Output Current : 7mA

Blink rate : 1 flash

every 3 sec.

WLSW:

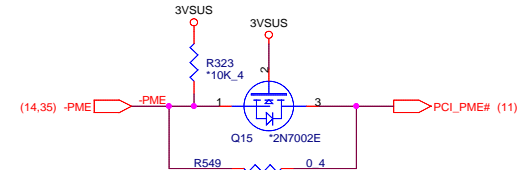
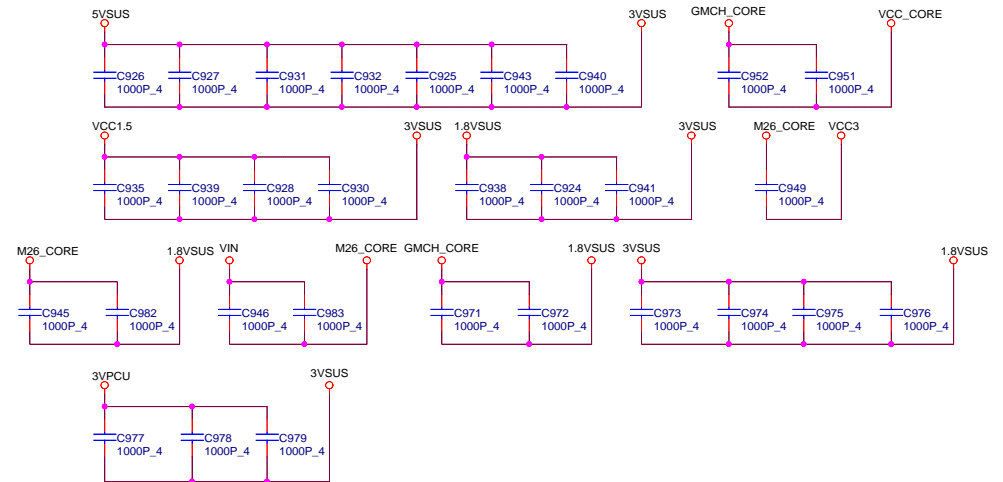
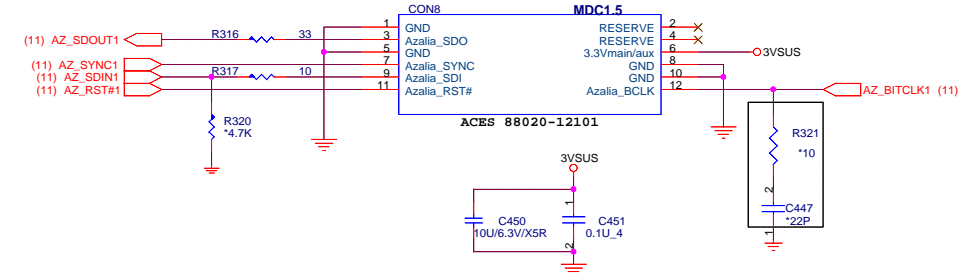
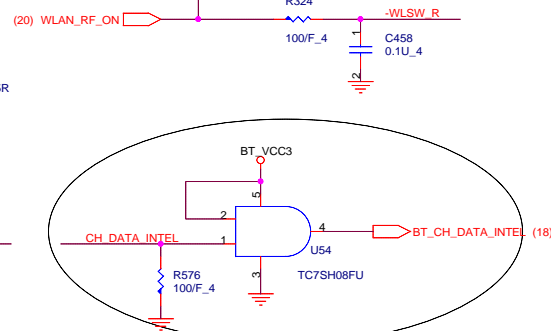
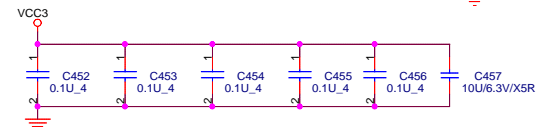
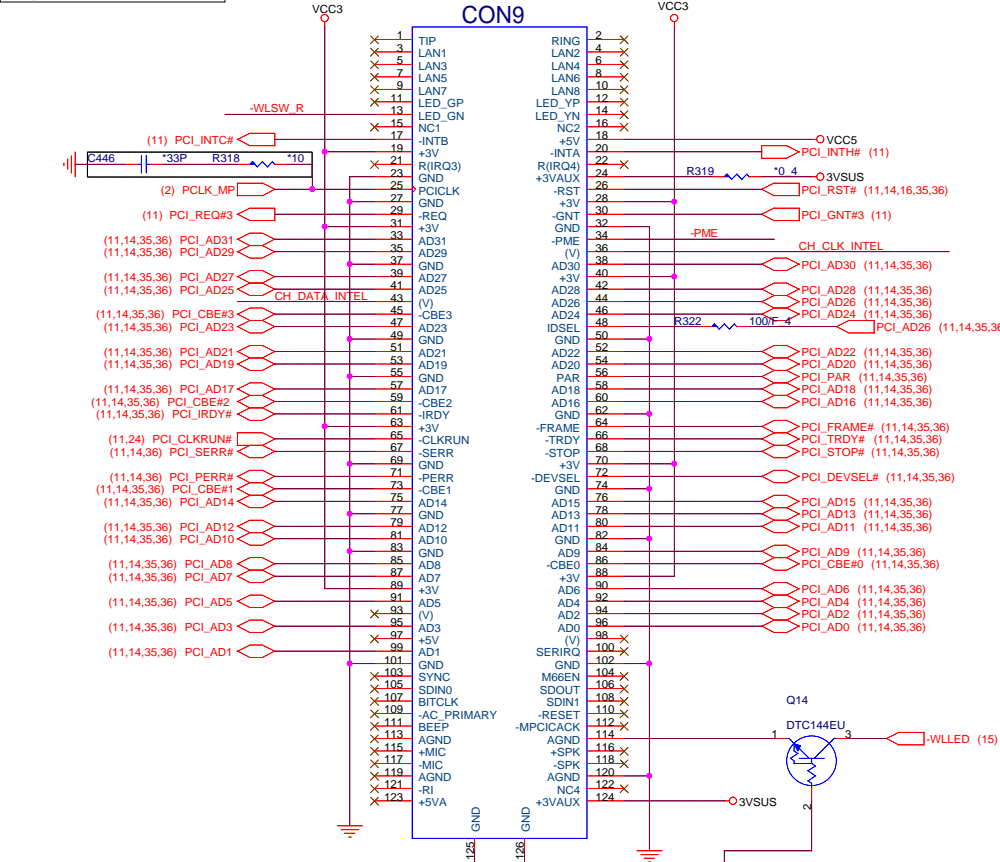
Low : disable the radio.

High : Enable the radio.

AMP 1734835-2

MINIPCI H=6.7

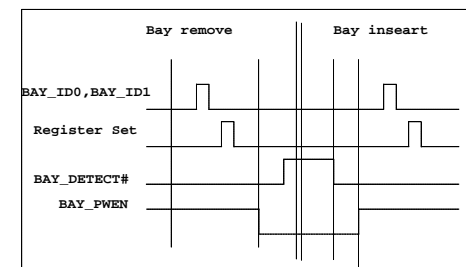
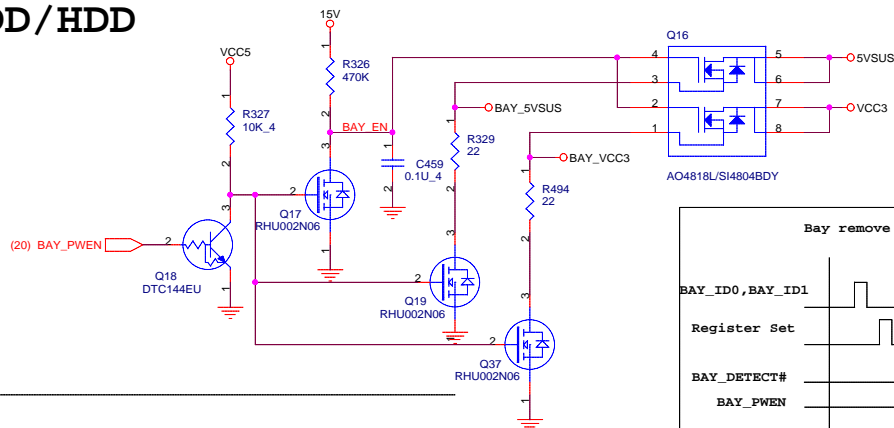
CON9



QUANTA
COMPUTER

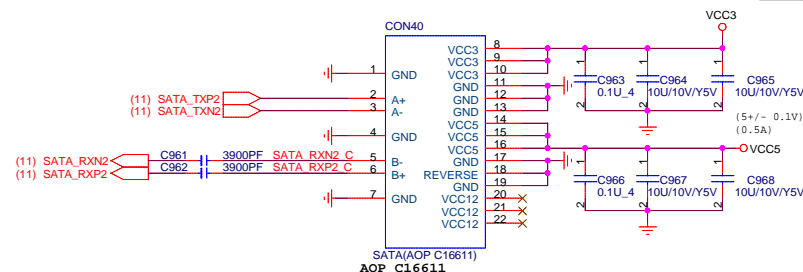
Title		MINIPCI /MDC
Size	Document Number	RJ5 Main Board
Date:	Thursday, May 12, 2005	Sheet 17 of 36
Rev	1A	

1. This part should not contain any substances which are specified in SS-00259-1
 2. Purchase ink, paint, wire rods and molding resins only from the business partners that Sony approves as Green Partners.

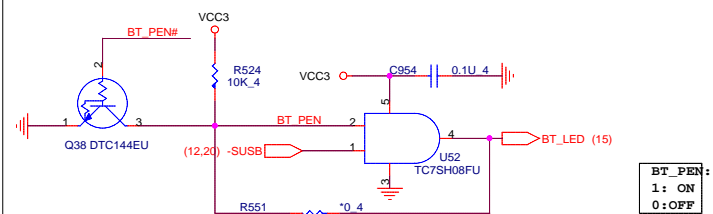
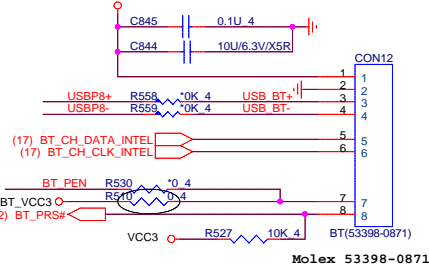
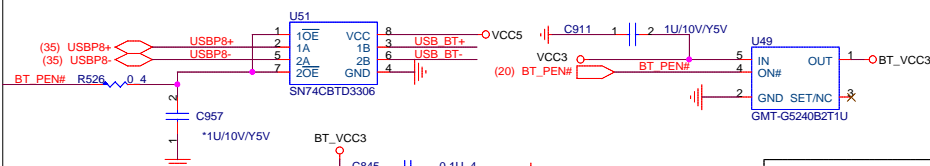


BAY_ID#	
0	SATA Device
1	USB Device

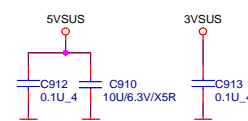
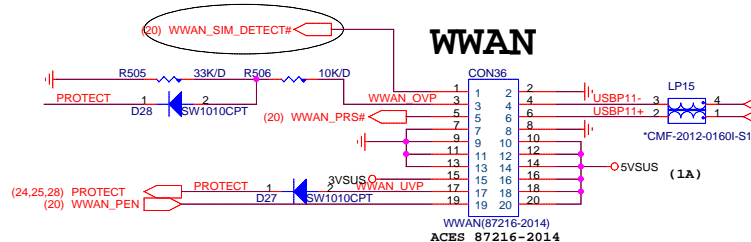
HDD CONNECTOR



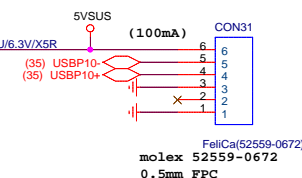
Bluetooth



WWAN



FeliCa



Felica: Molex 52689-0693



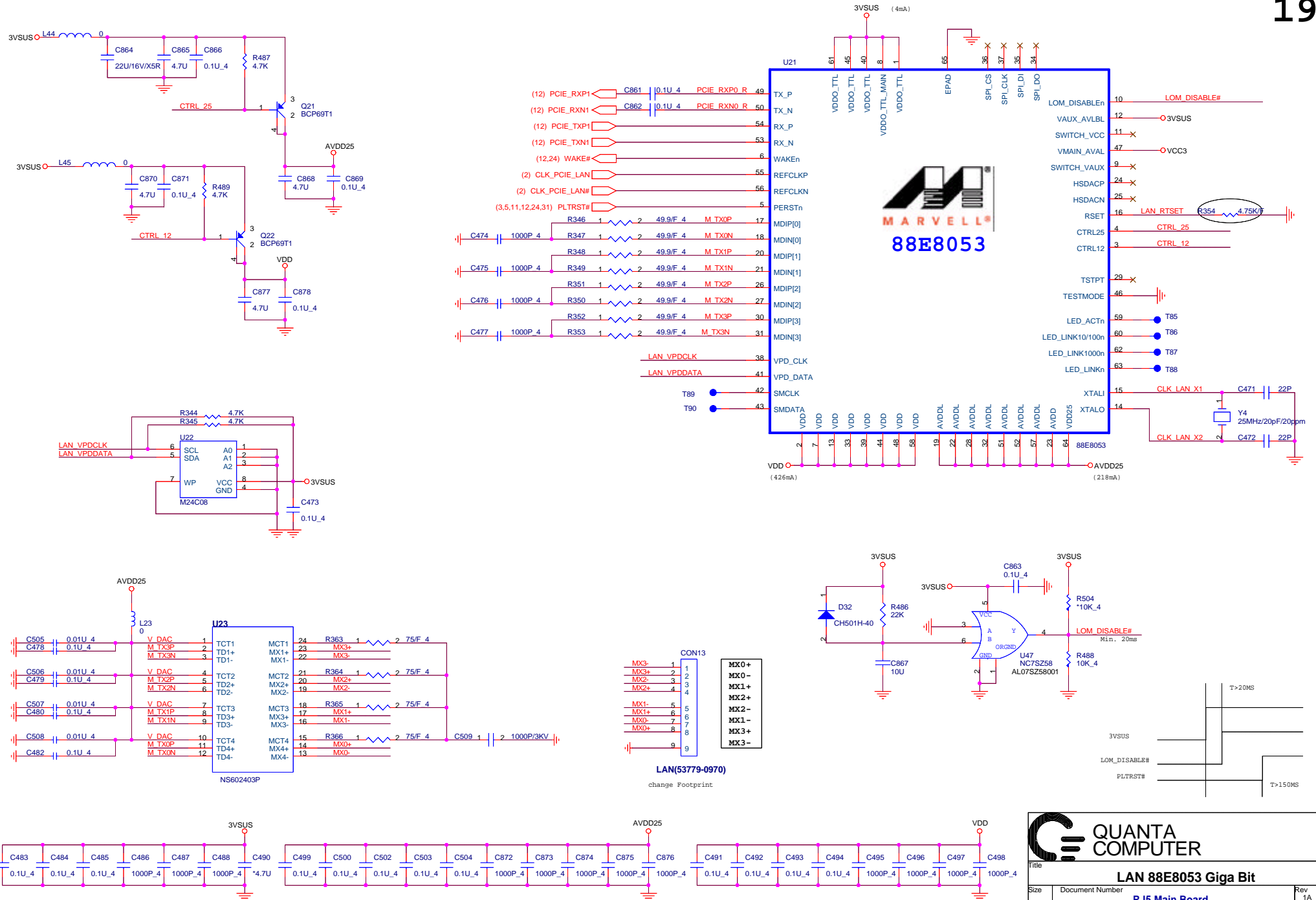
HDD/BAY/BT

RJ5 Main Board

Date: Thursday, May 26, 2005

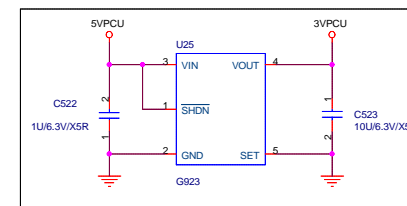
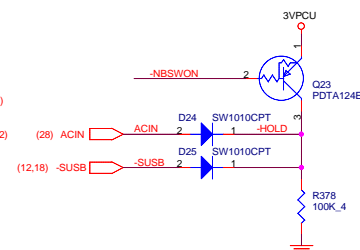
Sheet 18 of 30

1.This part should not contain any substances which are specified in SS-00259-1



	Enviroment	ENV0(BA0)	ENV1(BA1)	TRIS(BA2)
* IRE	0	0	0	0
ORD	0	1	0	0
DEV	1	0	0	0
PROG	1	1	0	0

```
BA0 : ENV0
BA1 : ENV1
BA4 : TRIS ( If = 1 will tristate all i/o pins)
BA5 : SHBM(If = 1 Enable share host BIOS memory)
```



Pin 94 if no use, pin 94(DN) should connect to ground.

Pin 24 if no pull-high, will can't reboot.

Pin 103 internal is "A19", Can't use to GPIO

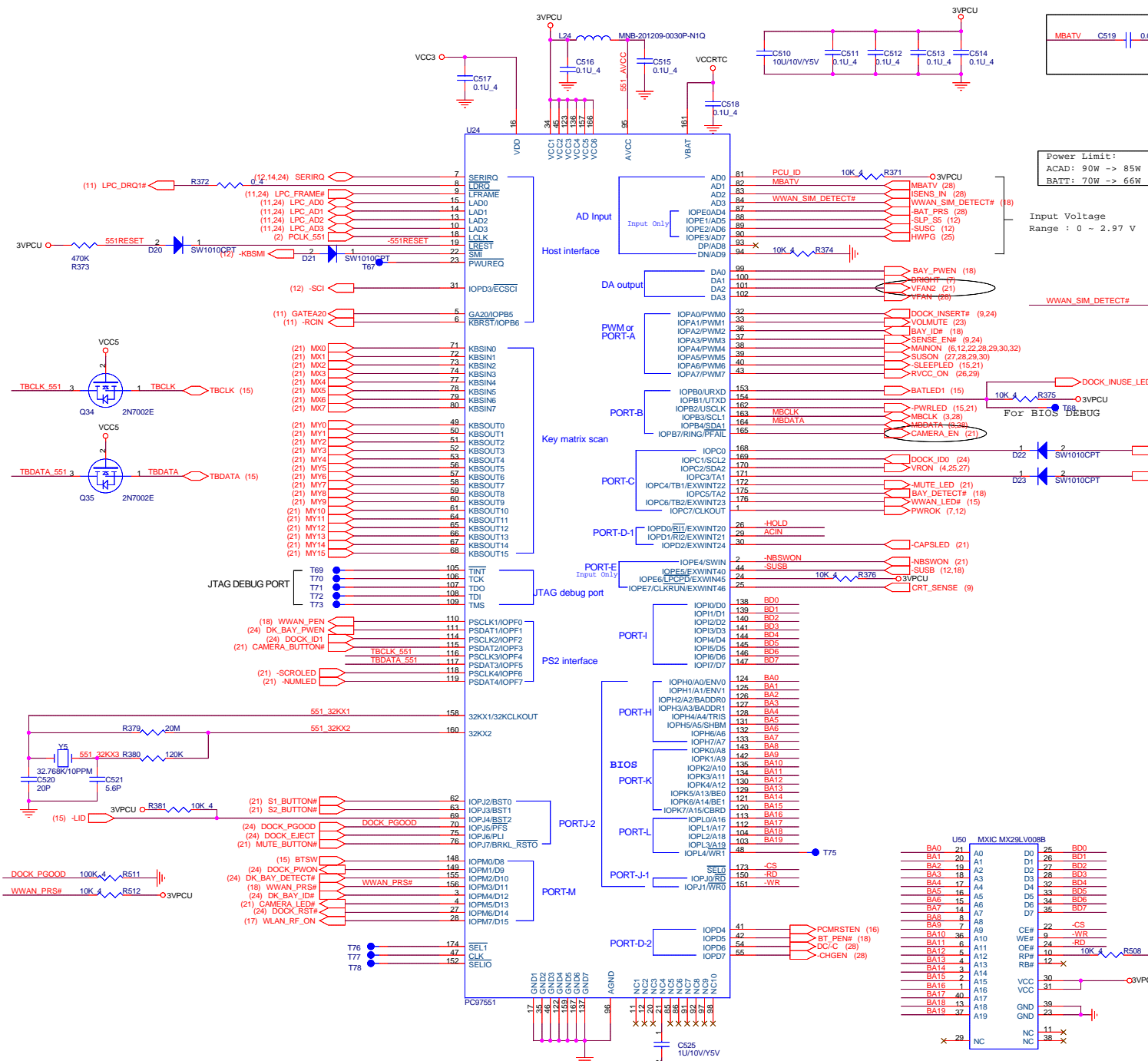
Pin 168 default is high

-DRQ0(pin 8) internal is no use



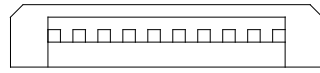
PC87591 & FLASH

Size	Document Number	R
	RJ5 Main Board	
Date:	Tuesday, May 10, 2005	Sheet 20 of 36

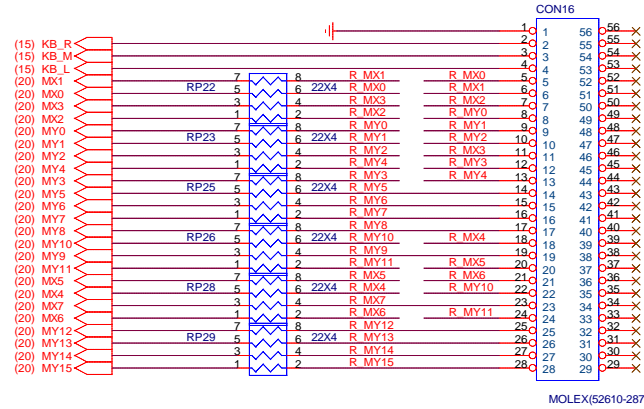


1.This part should not contain any substances which are specified in SS-00259-1

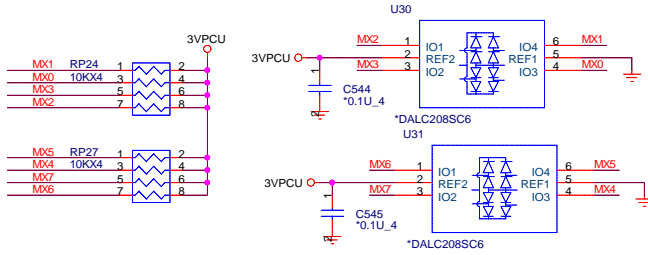
2. Purchase ink, paint, wire rods and molding resins only from the business partners that Sony approves as Green Partners



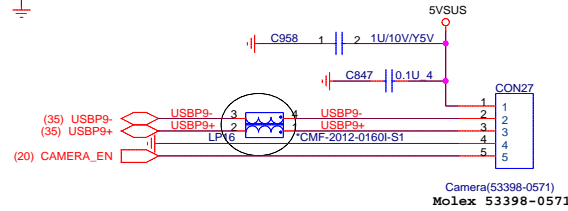
KEYBOARD



MOLEX(52610-2871)

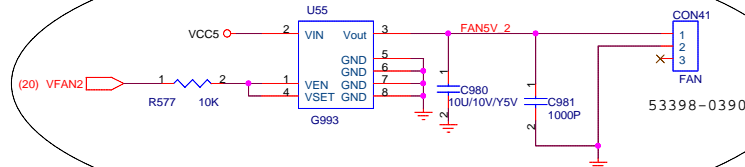


USB Camera



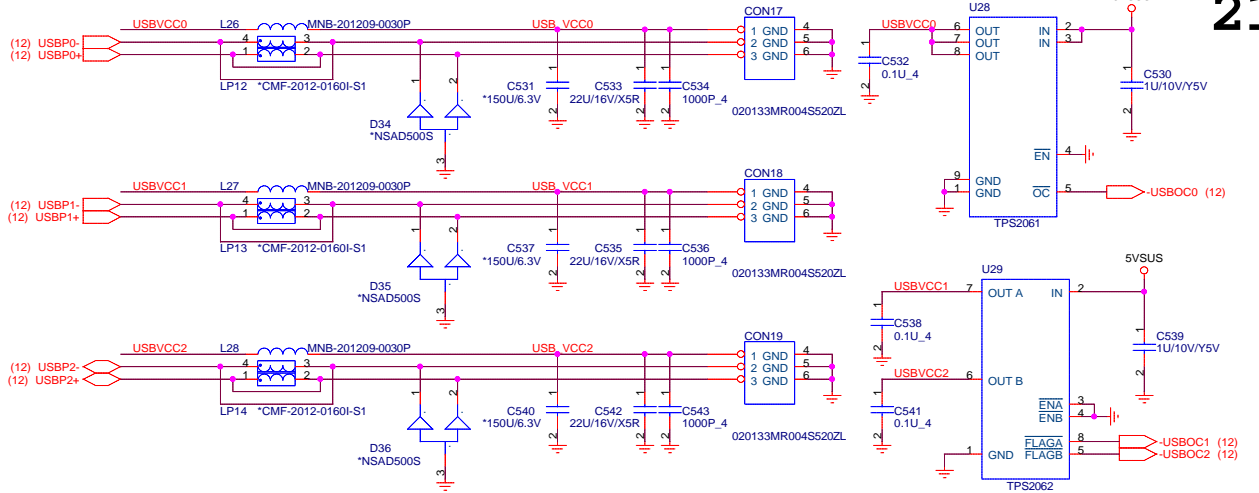
Camera(53398-0571)
Molex 53398-0571

2nd FAN UNIT

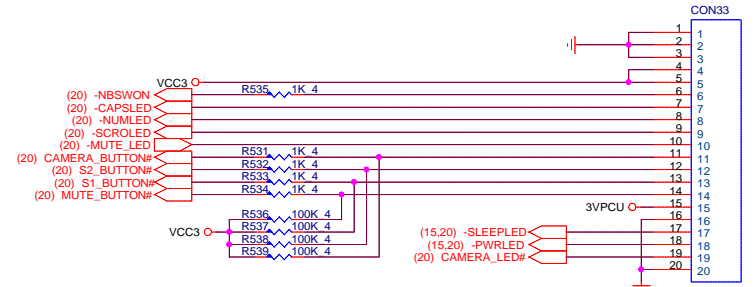


53398-0390

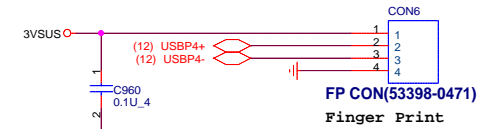
1.This part should not contain any substances which are specified in SS-00259-1
2.Purchase ink, paint, wire rods and molding resins only from the business partners that Sony approves as Green Partners.



POWER SW BOARD



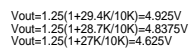
PS CON(52559-2070)
Molex_52559-2070



FP CON(53398-0471)
Finger Print

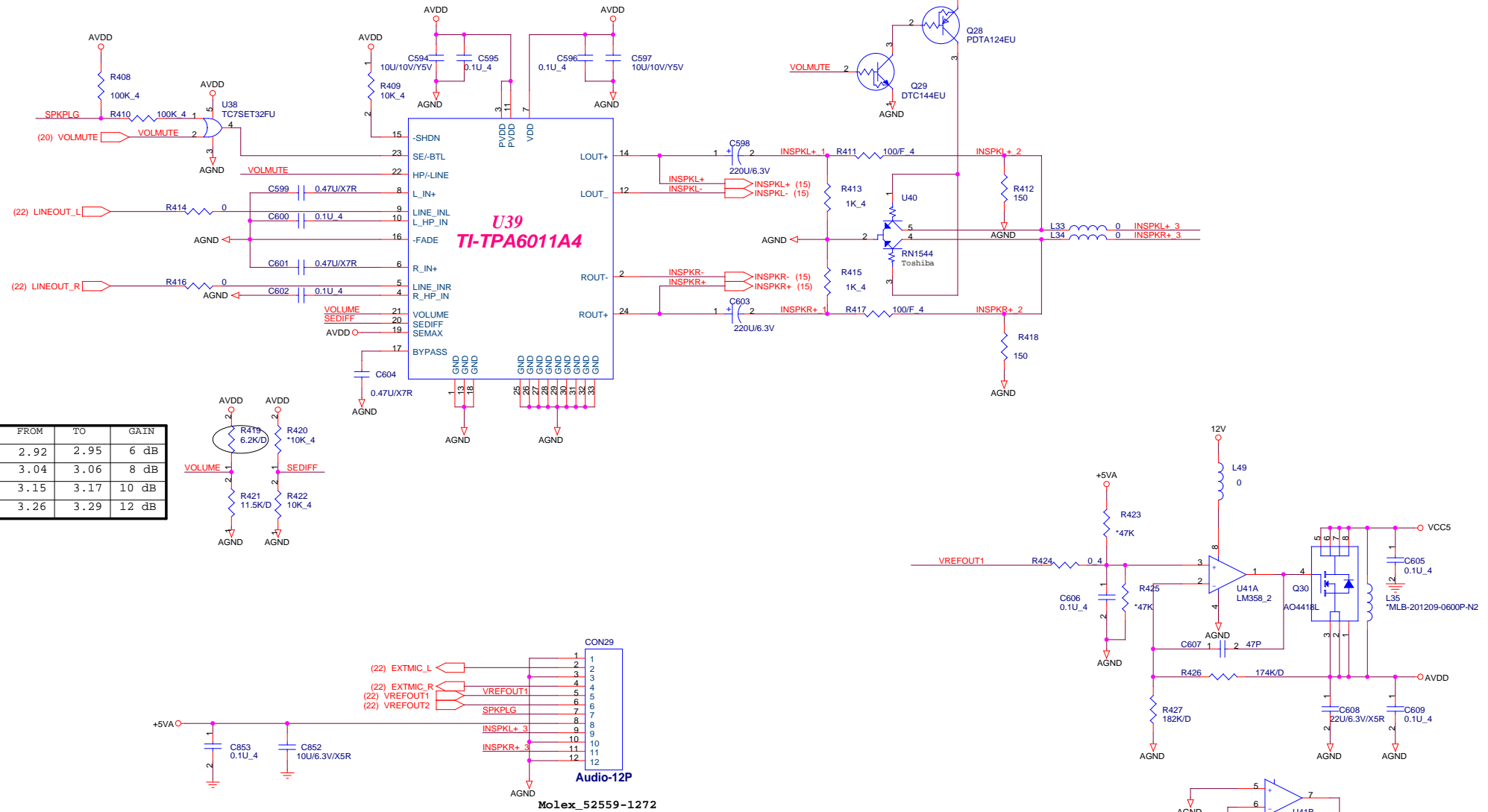


Title			K/B ,USB
Size	Document Number	Rev 1A	
RJ5 Main Board			
Date:	Tuesday, May 10, 2005	Sheet	21 of 36



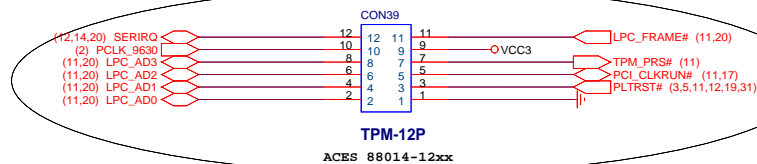
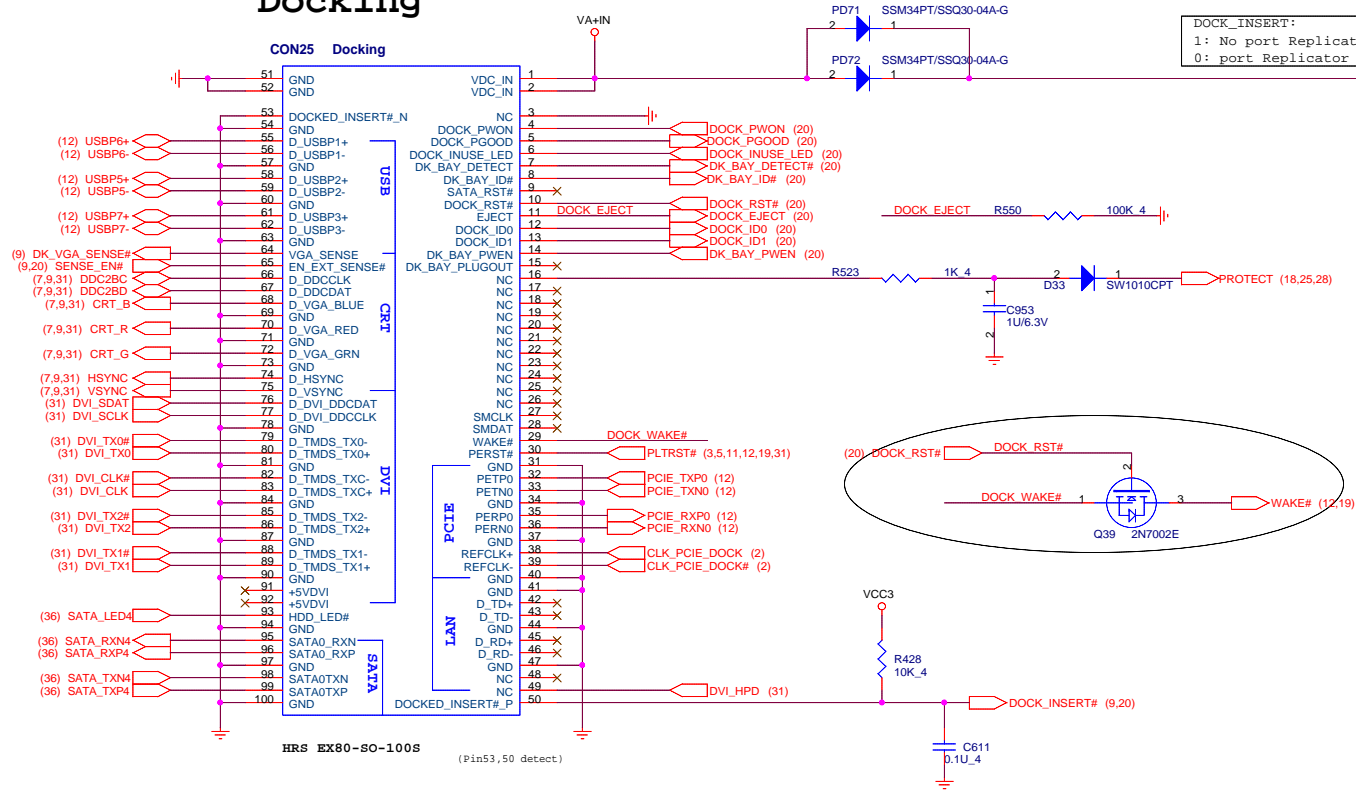
2. Purchase ink, paint, wire rods and molding resins only from the business partners that Sony approves as Green Partners

Audio amplifier



Title
AUDIO AMP
Size Document Number
RJ5 Audio Board
Date: Thursday, May 26, 2005 Sheet 23 of 36 Rev 1A

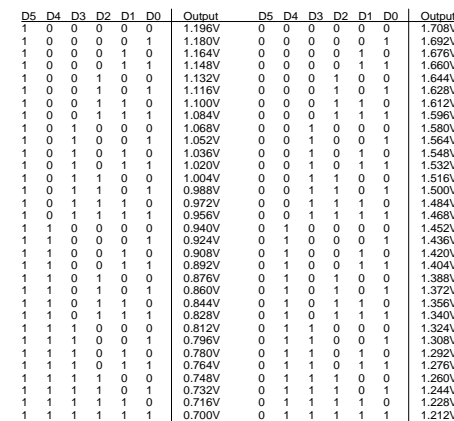
Docking




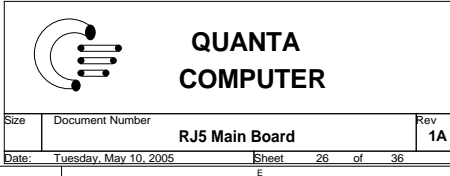
Title				
Docking/TPM				
Size	Document Number			Rev
	RJ5 Main Board			1A
Date:	Tuesday, May 10, 2005	Sheet	24	of 36

1.This part should not contain any substances which are specified in SS-00259-1

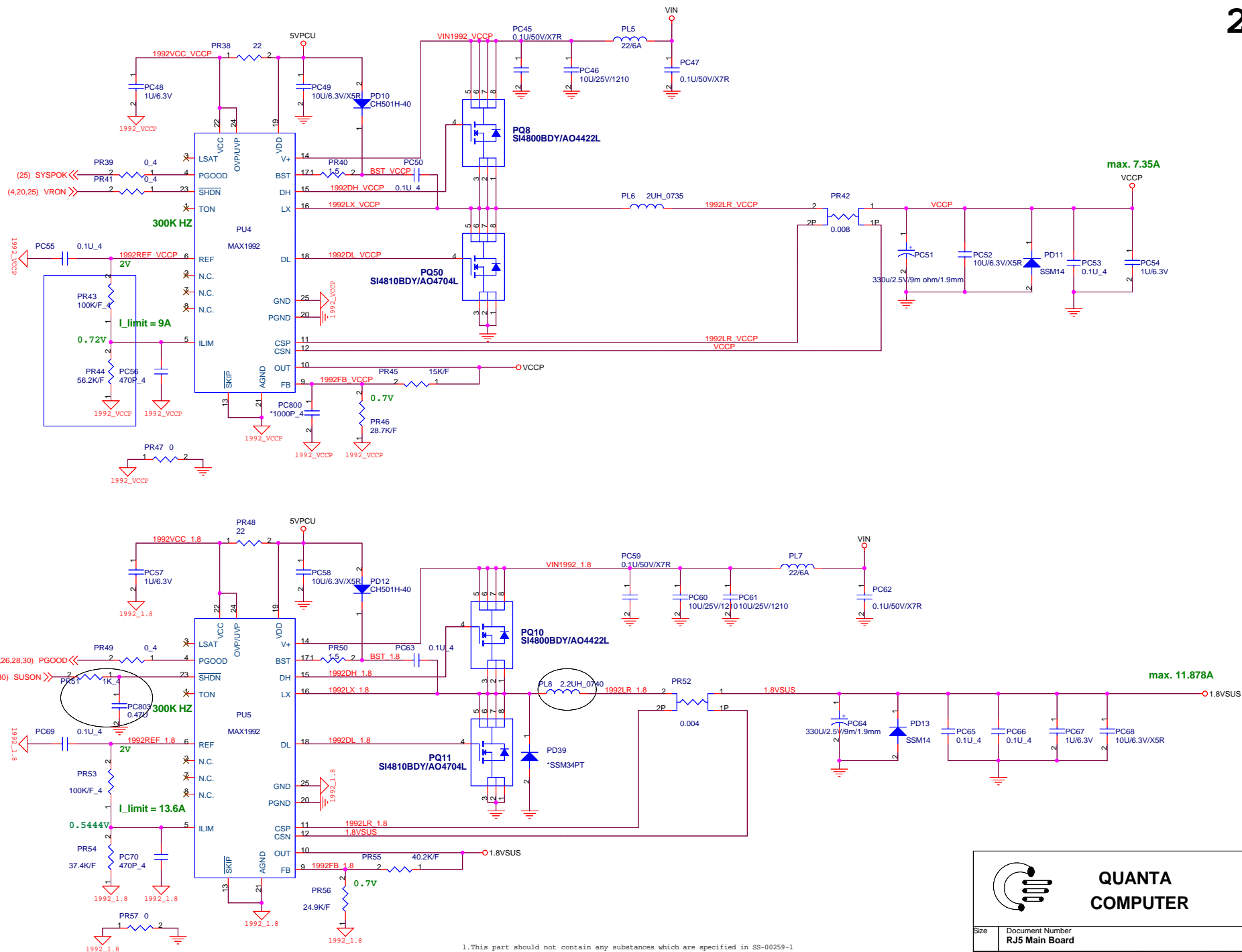
2.Purchase ink, paint, wire rods and molding resins only from the business partners that Sony approves as Green Partners.



 <div style="text-align: center;"> <h1>QUANTA COMPUTER</h1> </div>					Rev	1A
Size	Document Number					
RJ5 Main Board						
Date:	Tuesday, May 10, 2005			Sheet	25	of 36




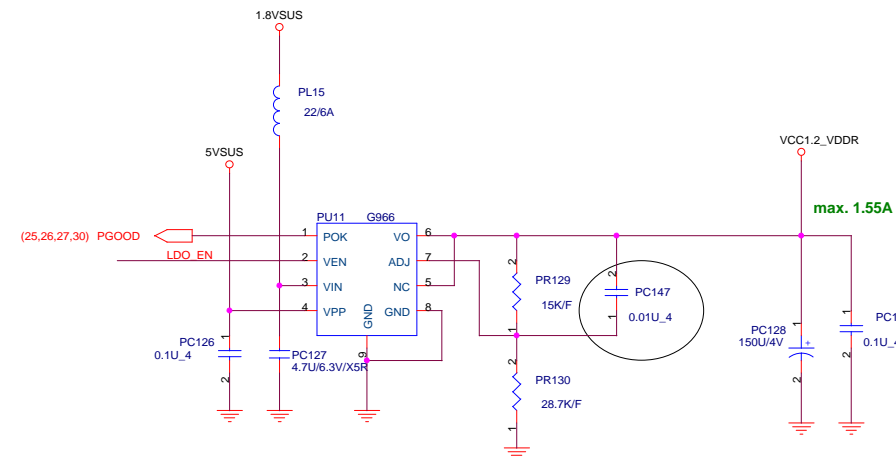
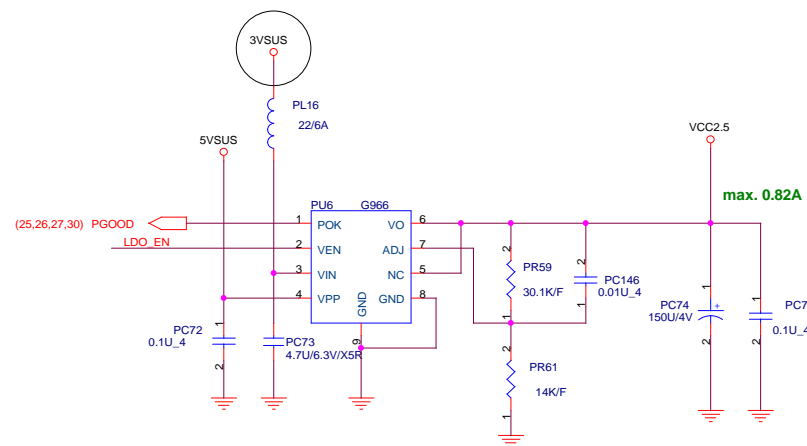
2. Purchase ink, paint, wire rods and molding resins only from the business partners that Sony approves as Green Partners.



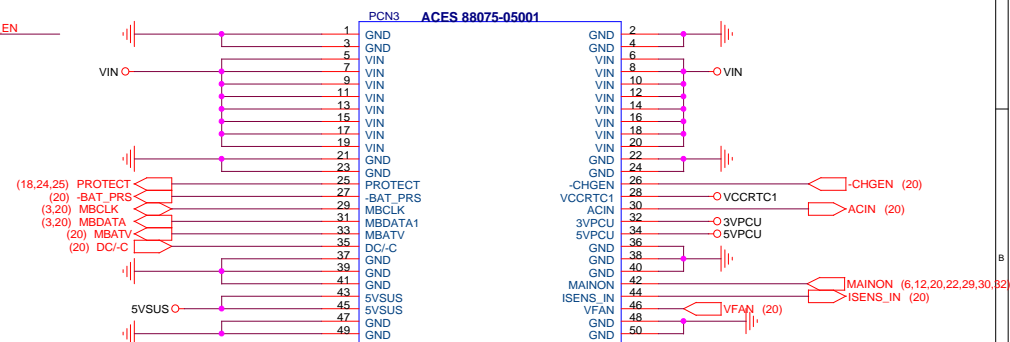
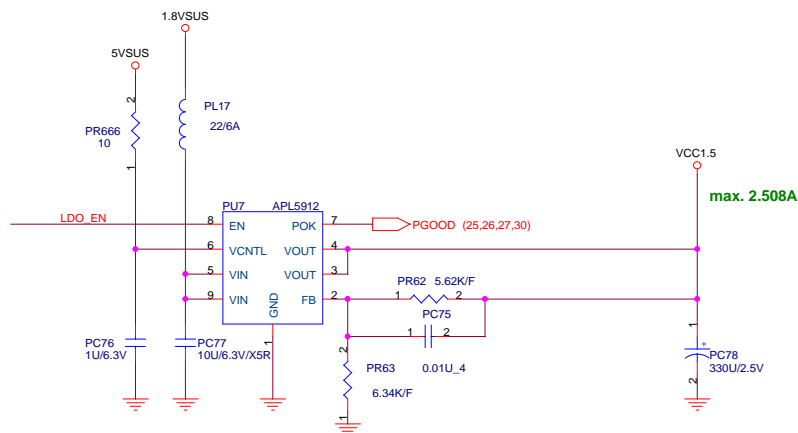
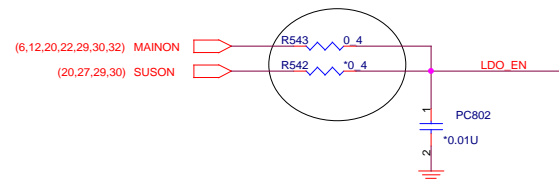
1. This part should not contain any substances which are specified in SS-00259-1

2. Purchase ink, paint, wire rods and molding resins only from the business partners that Sony approves as Green Partners.

 QUANTA COMPUTER		Size	Document Number	Rev
			RJS Main Board	1A
Date:	Tuesday, May 10, 2005	Sheet	27	of 36



VCC3 ○ — ○ 3VSUS
VCC5 ○ — ○ 5VSUS
VCC1.8 ○ — ○ 1.8VSUS



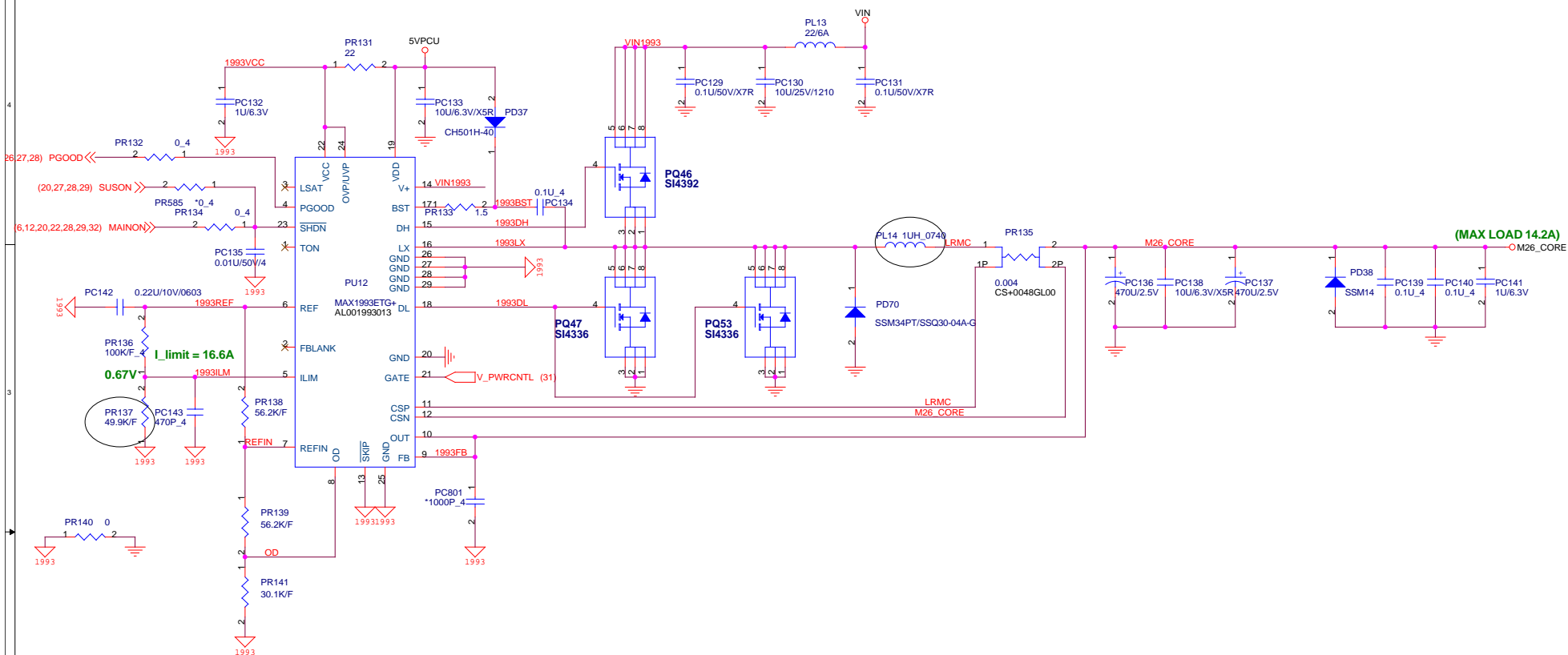
**QUANTA
COMPUTER**

Size	Document Number	Rev
	RJ5 Main Board	1A
Date:	Tuesday, May 10, 2005	Sheet 28 of 36

1. This part should not contain any substances which are specified in SS-00259-1

2. Purchase ink, paint, wire rods and molding resins only from the business partners that Sony approves as Green Partners.





M24_CORE voltage setting:

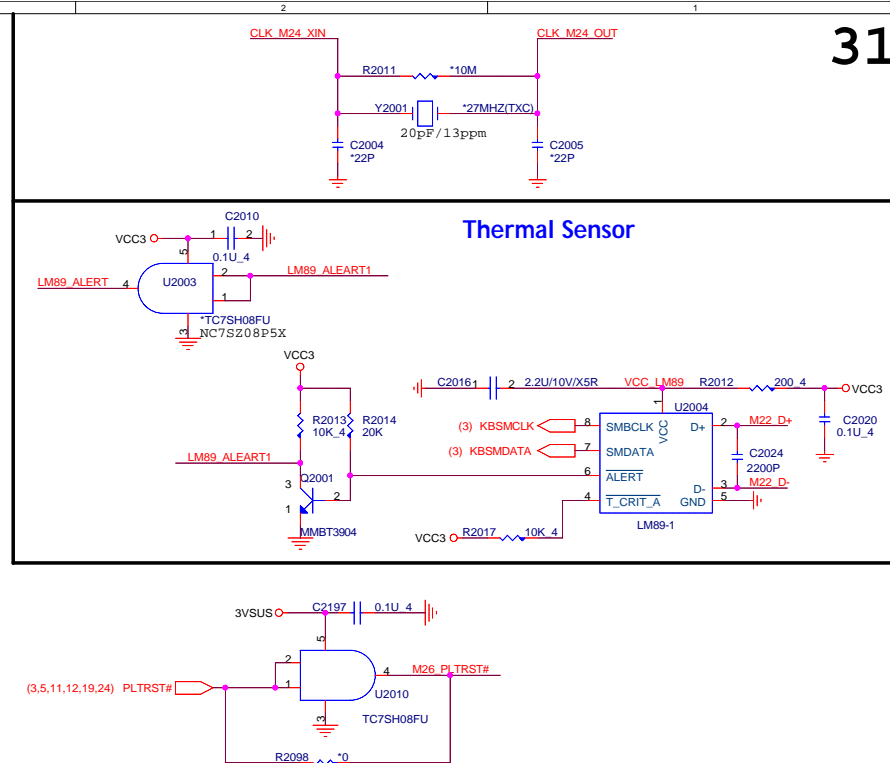
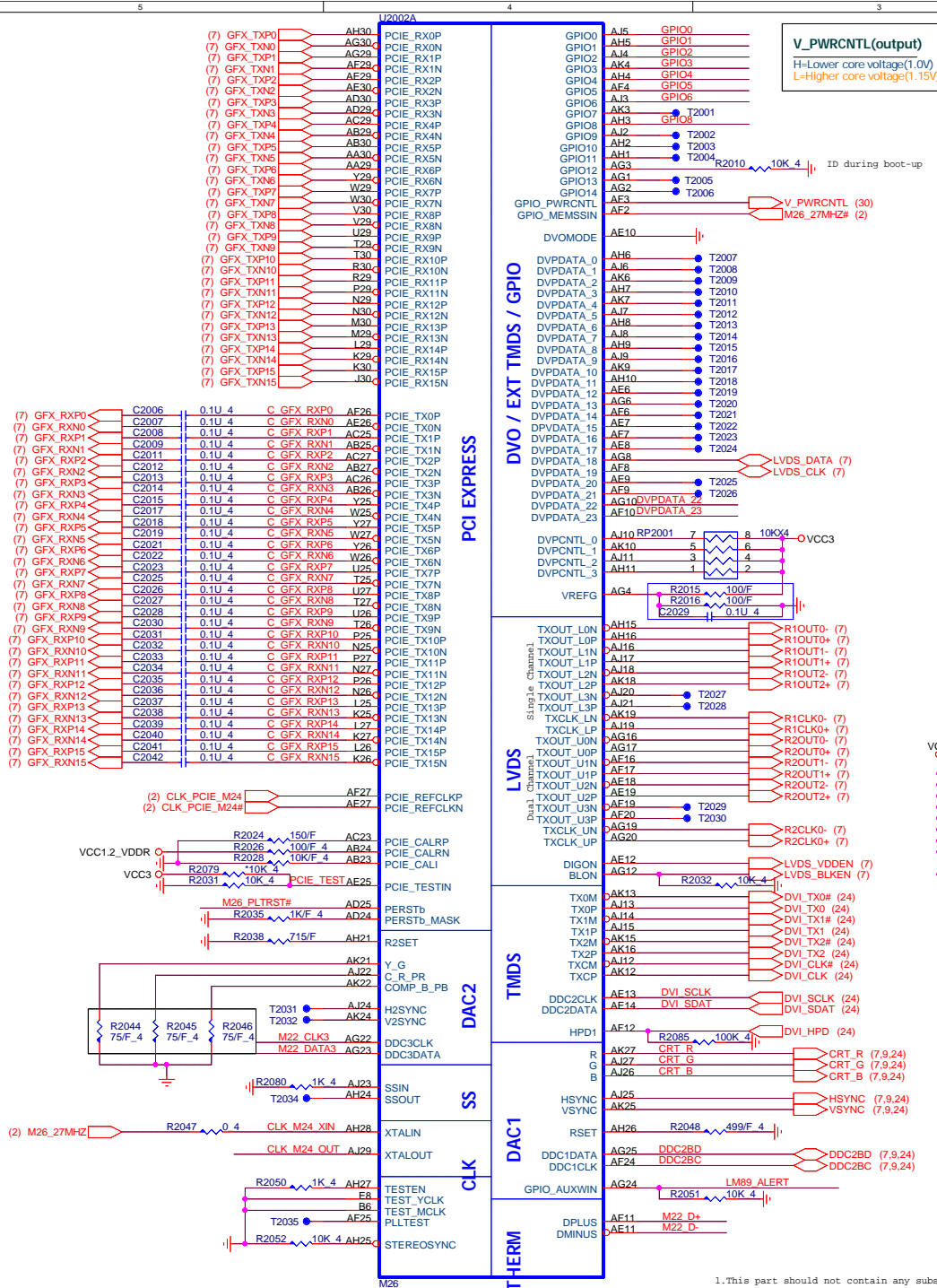
	PR138 Value	PR139 Value	PR141 Value	V_PWRCNTL	
				Low	High
M24	49.9 K/F	49.9 K/F	27.4 K/F	1.215V	1V
	56.2 K/F	56.2 K/F	30.1 K/F	1.211V	1V



**QUANTA
COMPUTER**

Size	Document Number	Rev
	RJ5 (M26_CORE)	1A
Date:	Wednesday, May 18, 2005	Sheet 30 of 36

1. This part should not contain any substances which are specified in SS-00259-1.
2. Purchase ink, paint, wire rods and molding resins only from the business partners that Sony approves as Green Partners.



PCI_TEST	ATI Internal USE 0: Default
GPIO_0	Transmitter Power Savings Enable 0: 50% Tx output swing for mobile mode 1: full Tx output swing
GPIO_1	Transmitter De-emphasis Enable 0: Tx de-emphasis disabled for mobile mode 1: Tx de-emphasis enabled
GPIO_(3,2)	00: PCI Express 1.0 mode 01: Kyrene-compatible mode 10: PCI Express 1.0 mode 11: PCI Express 1.0A mode and short-circuit internal loopback mode (Rx connected directly to Tx of PHY)
GPIO_4	0: NON REVERSED LANES IN LAYOUT 1: REVERSED LANES IN LAYOUT
GPIO_5	DO NOT FORCE COMPLIANCE STATE QUICKLY
GPIO_6	COMMON MODE RANGE 0: Default
GPIO_8	DEBUG SIGNALS NOT BROUGHT OUT
GPIO(9, 13:11) ROMIDCFG INT P/D	NO USE: 0000 (ID[1:4] = GPIO[11, 12, 13, 9]) 0x0x: No ROM, CHG_ID=0 0x1x: No ROM, CHG_ID=1 1011 - Serial M25P10 ROM (ST), chip ID is from ROM 1100 - Serial M25P05 ROM (ST), chip ID is from ROM

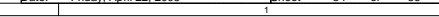


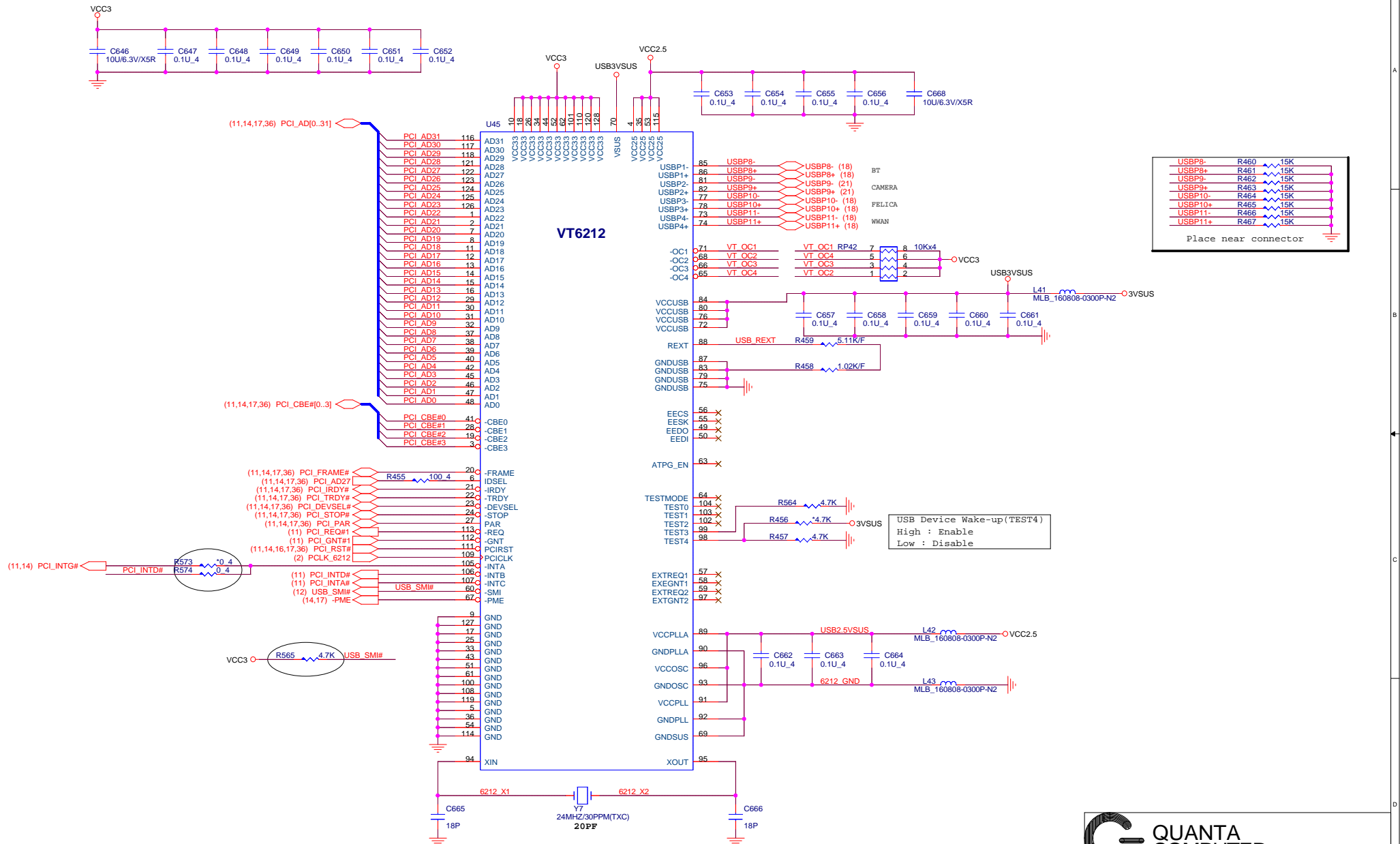
**QUANTA
COMPUTER**

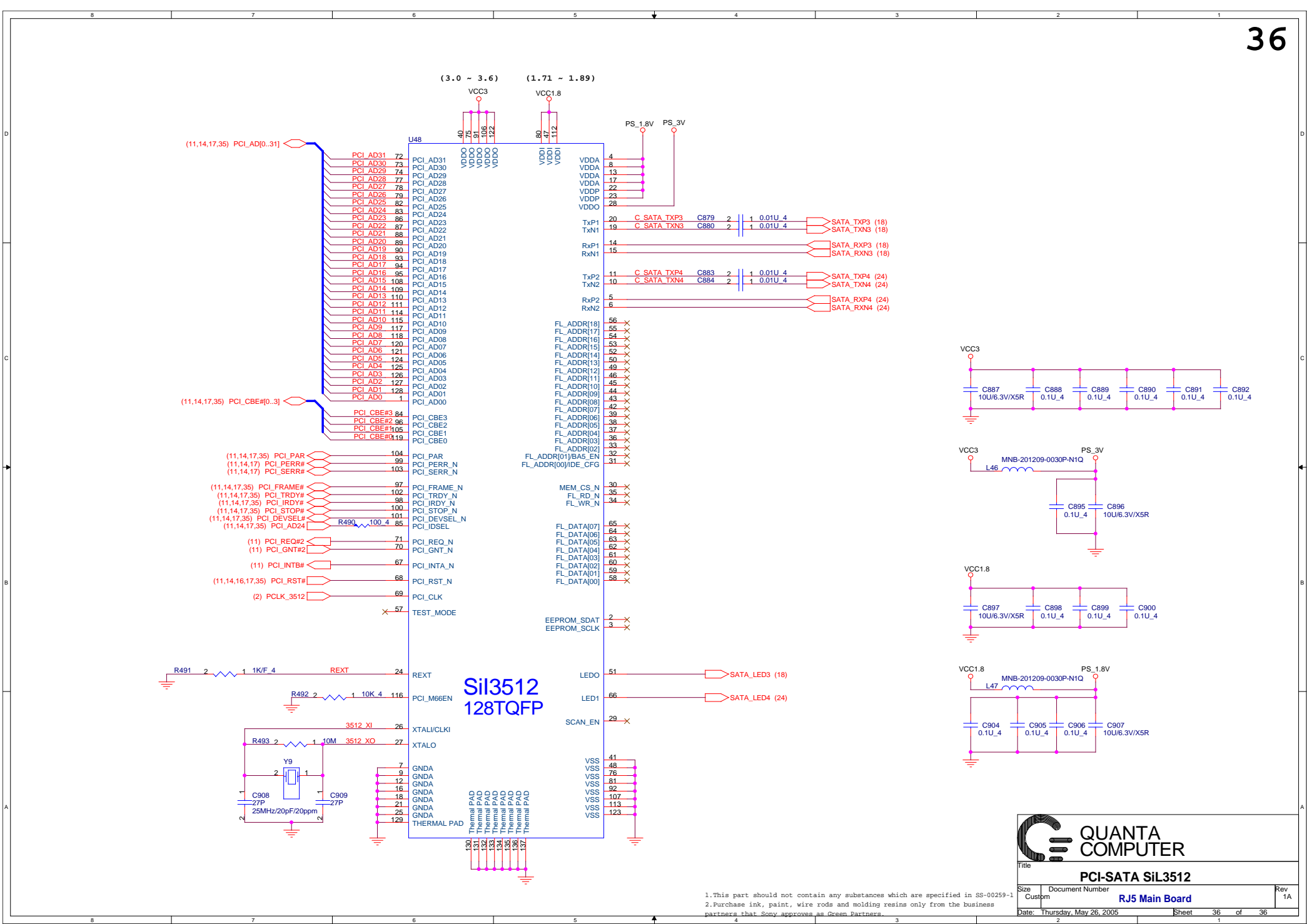
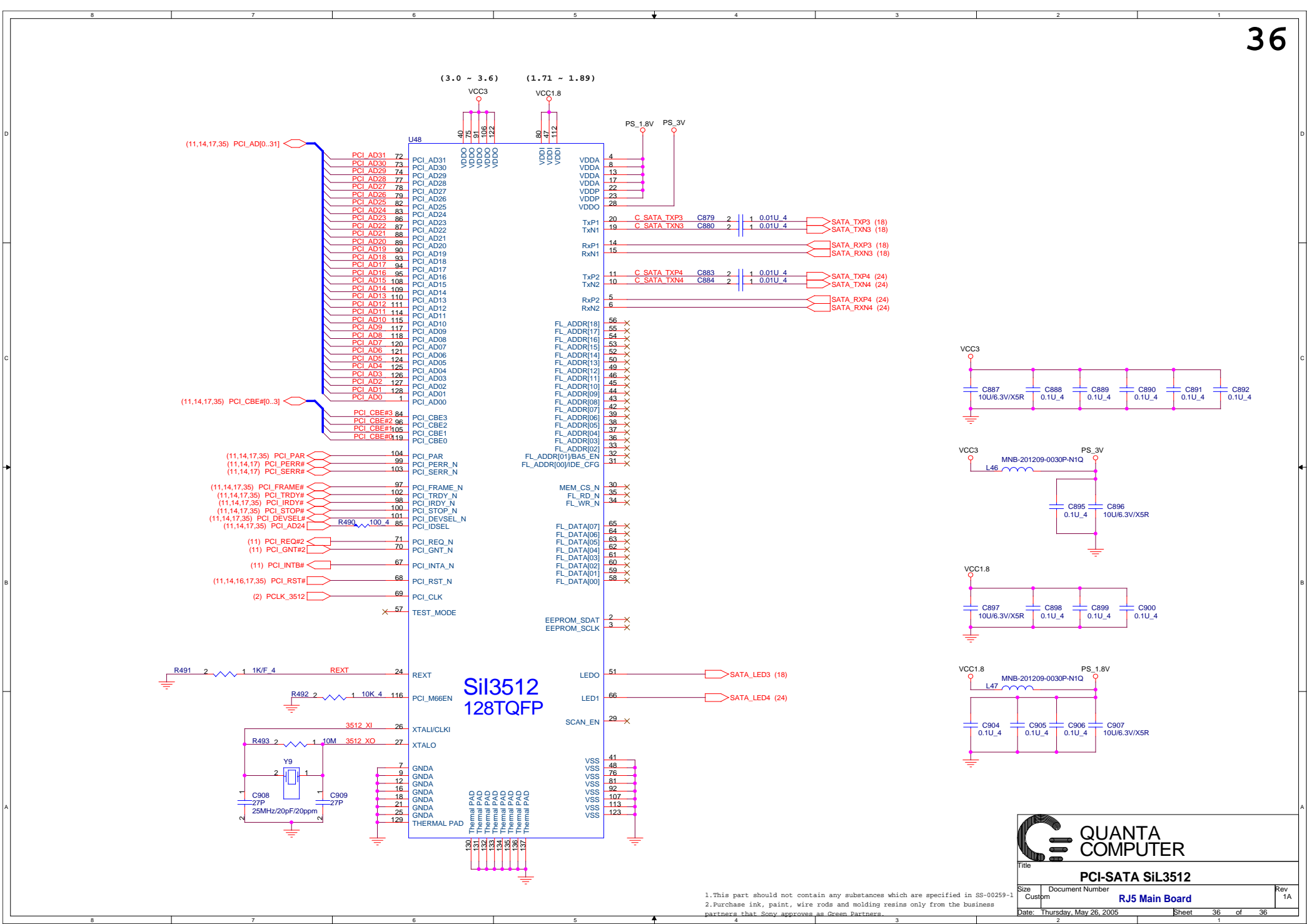
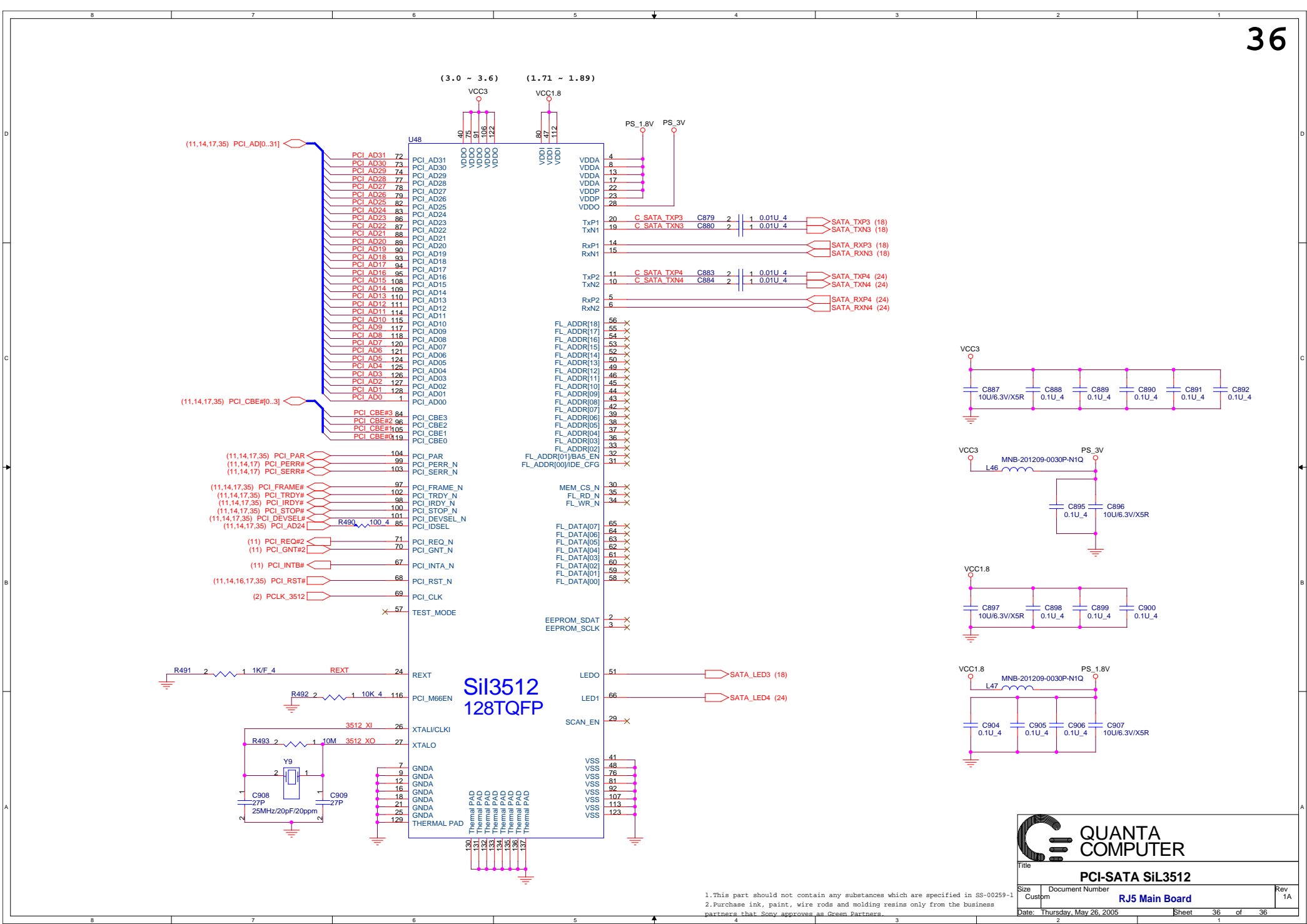
Size	Document Number	Rev
	RJ5 ATI M26	1A
Date:	Tuesday, May 10, 2005	Sheet 31 of 36









[illegible][illegible][illegible][illegible]